

Readiness for FIFA WC 2010

Transportation Perspective

Hein Stander
BKS (Pty) Ltd

INTRODUCTION

1. Background

2. Lessons Confederations Cup 09

Readiness in four main areas

3. Stadia and immediate precincts

4. Roads projects

5. Other transport facilities

6. Transport operations, incl communication

7. Bottom line

Photo of the week

George Veltchev submitted this photograph taken in the parking lot at Northgate shopping centre.



1. BACKGROUND: THE EVENT



- ◆ 32 teams
- ◆ 64 matches
- ◆ 31 days (11/6-11/7)
- ◆ 10 stadia
- ◆ 9 cities
- ◆ 375 000 int visitors on any one day

THE EVENT

- **Biggest international event ever for SA**
- **Once in a lifetime experience**
- **SA desired it – now taking place in 7 months**
- **It enabled/accelerated infrastructure development of R billions**
- **Successful event is challenge/opportunity for total country**
- **Motivation/dedication of all citizens crucial**
- **Mr Blatter's score of 75% for Confed Cup is not good enough!**

2010 TRANSPORT PLANNING

- **DOT INTOP Sep 07**
- **Host Cities TOP's – latest submissions Sep 09 – feedback?**
- **Some provinces PTOp's**
- **FIFA visits – presentations, feedback – latest Sep 09**
- **Interaction FIFA/LOC, DOT, Provinces and Host Cities ad hoc since 07, presently more regular**
- **De-briefing of Confed Cup experience Aug/Sep 09**
- **DOT re-convened LTTT in Aug 09**
- **DOT – 6 Nov 09 – Feedback TOP's – rated readiness into TOP's – to be discussed later in Nov**

2. EXPERIENCE/LESSONS FROM CONFED CUP

- **Better training required for all involved (volunteers, drivers, etc), improve quality of manpower**
- **Coordination between security and transport, also between levels of government lacking – sending out mixed messages**
- **Communication with public poor – causing failures of transport operations – communication protocol required**
- **Management of transport operations lacking – infrastructure alone cannot deliver event**
- **Over reliance on P&R – public transport focus for 2010**
- **Inadequate lighting main concern on security front**

BEZ VALLEY

ZOOM x1



ELLIS PARK PICK UP POINT





  Pretoria Sport Union Shuttle →

←   LC de Villiers Shuttle

←   Rissik Station

←   Pretoria Technical High School Park and Walk

2009.06.19 08:35

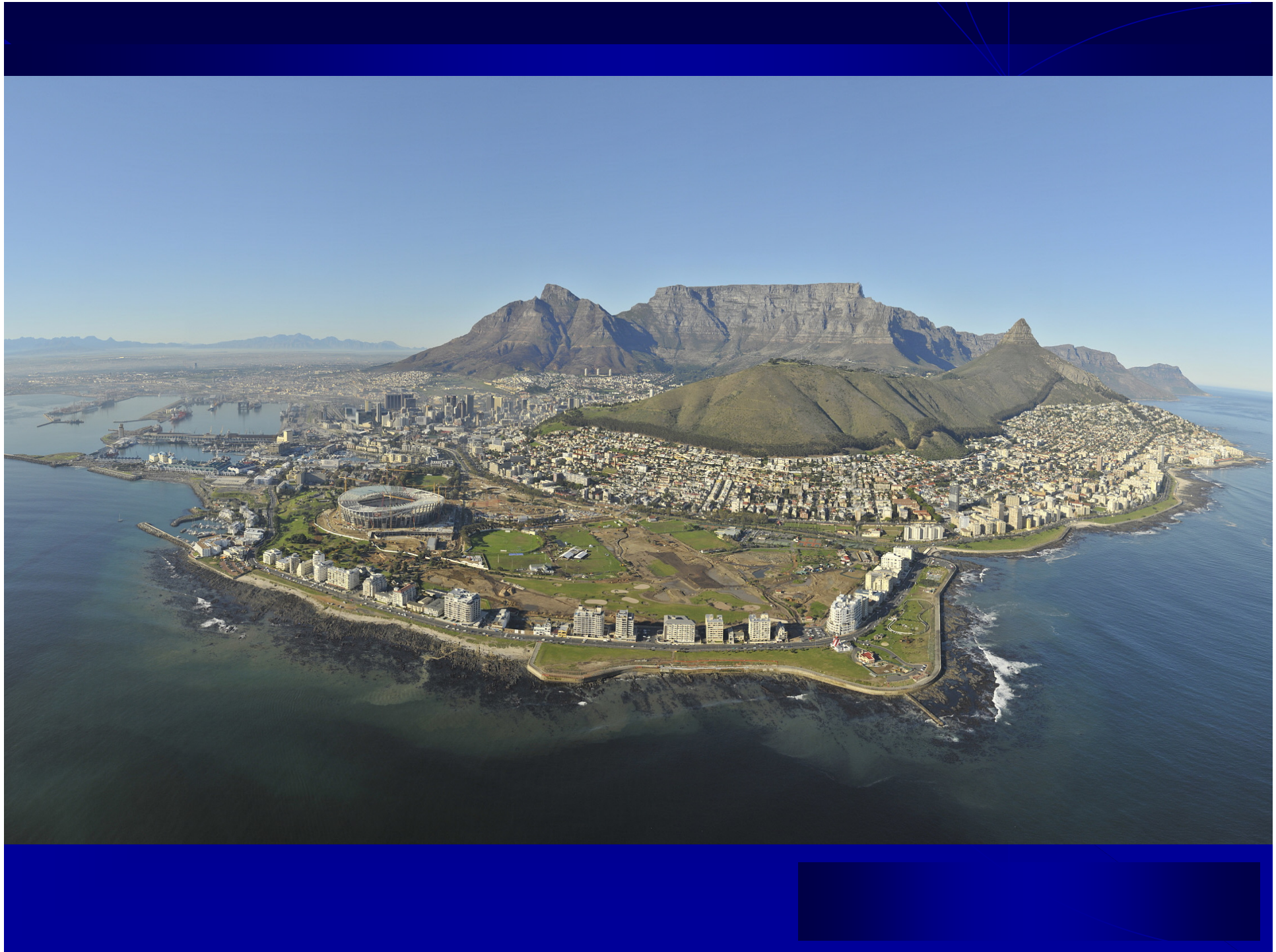
FURTHER ISSUES FOR 2010

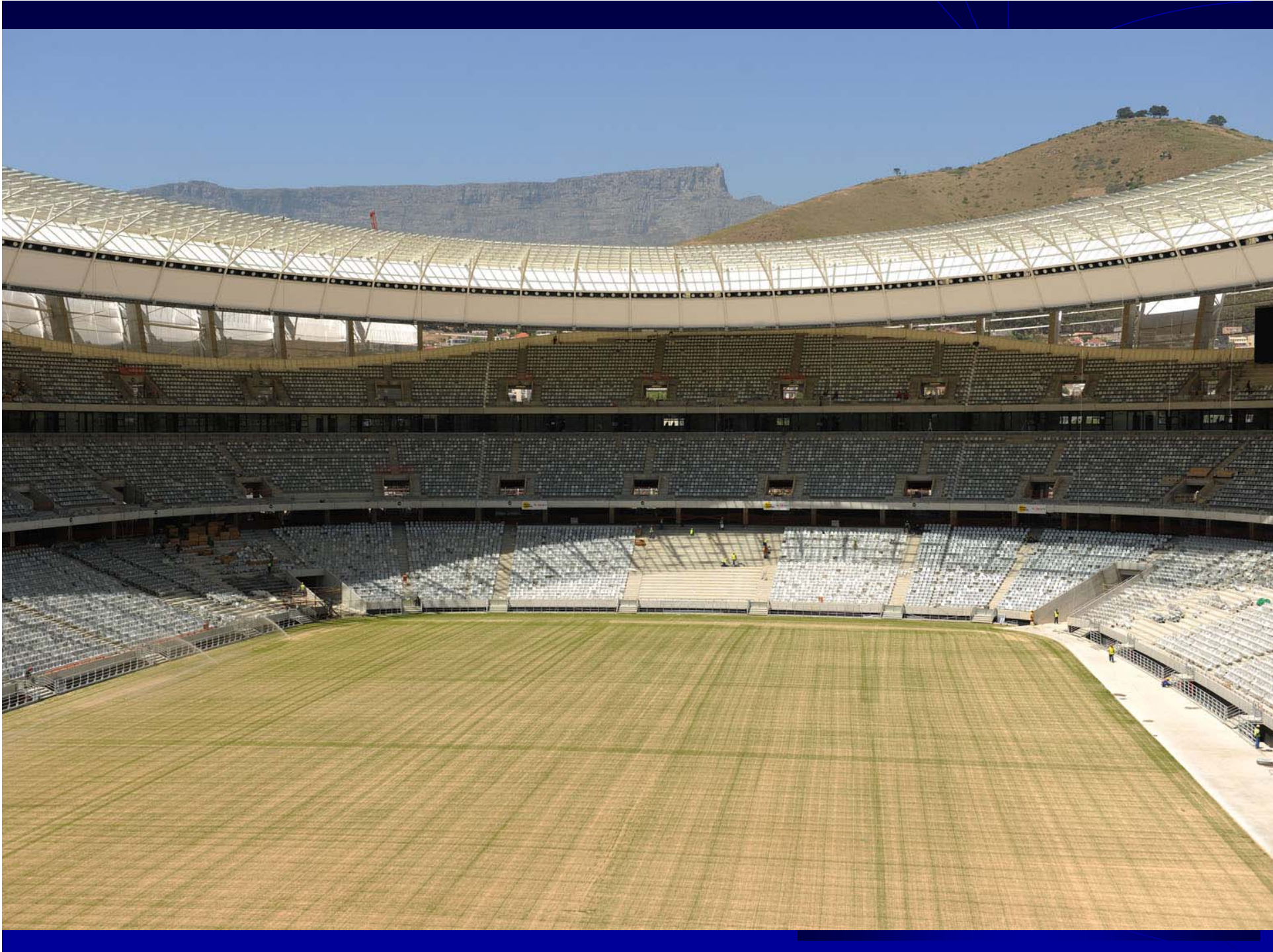
- **Information flow to international visitors**
- **Real test in 2010 will be regional transport – intercity buses, air travel**
- **Testing of readiness should be performed**
- **Contingency plans developed**
- **Use ticket sales to verify expected demand**
- **Firm up on accommodation info**
- **Coordinate on all levels and between all role players**

3. STADIA

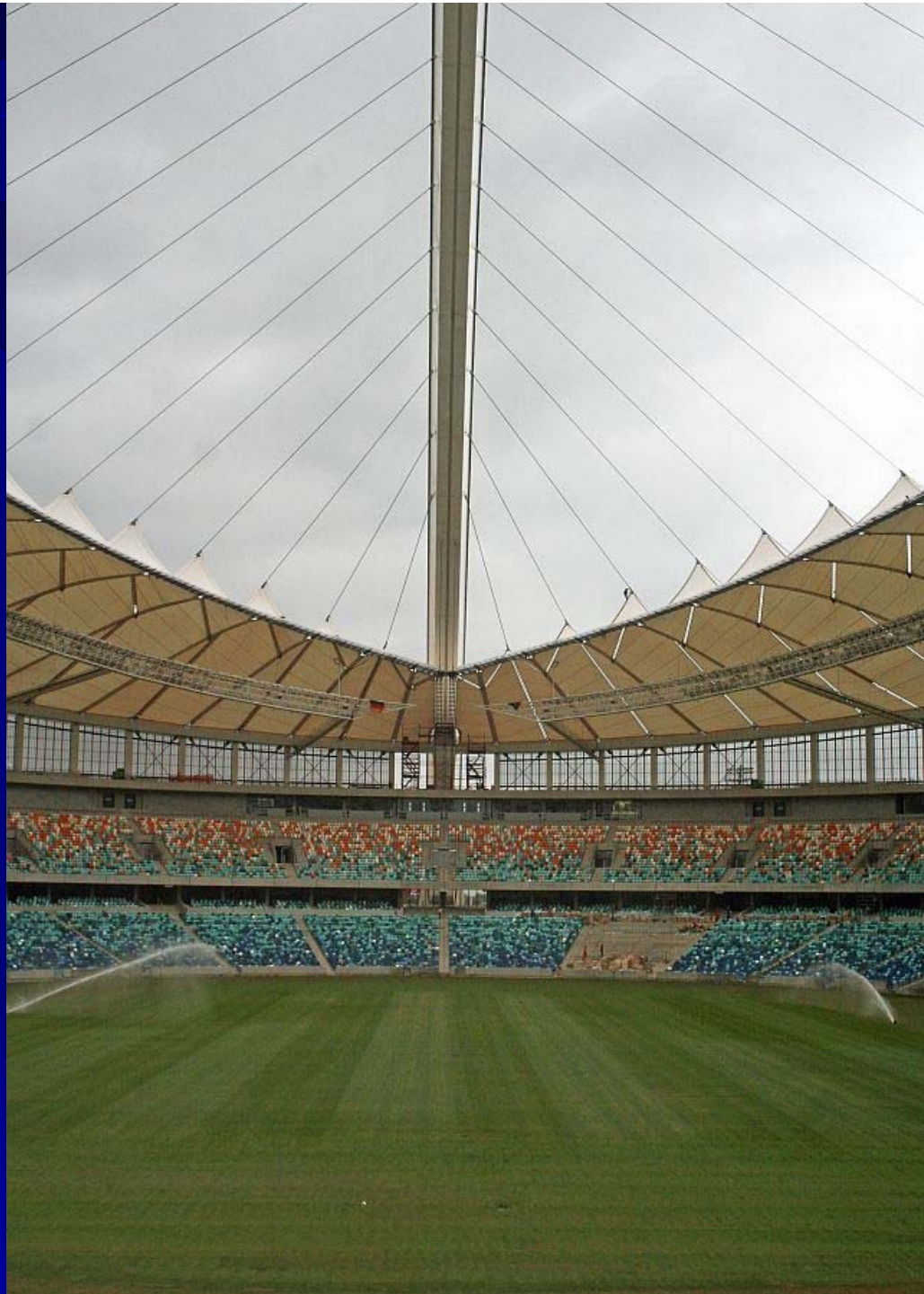
- **New/major revamped** (Soccer City, Cape Town, Moses Mabhida, Port Elizabeth, Mbombela, Polokwane)
 - construction largely completed
 - inaugural events 1st quarter 2010
 - supporting services/facilities not yet in place everywhere
- **Existing** (Ellispark, Loftus, Mangaung, Rustenburg)
 - had Confed/other experience to build on









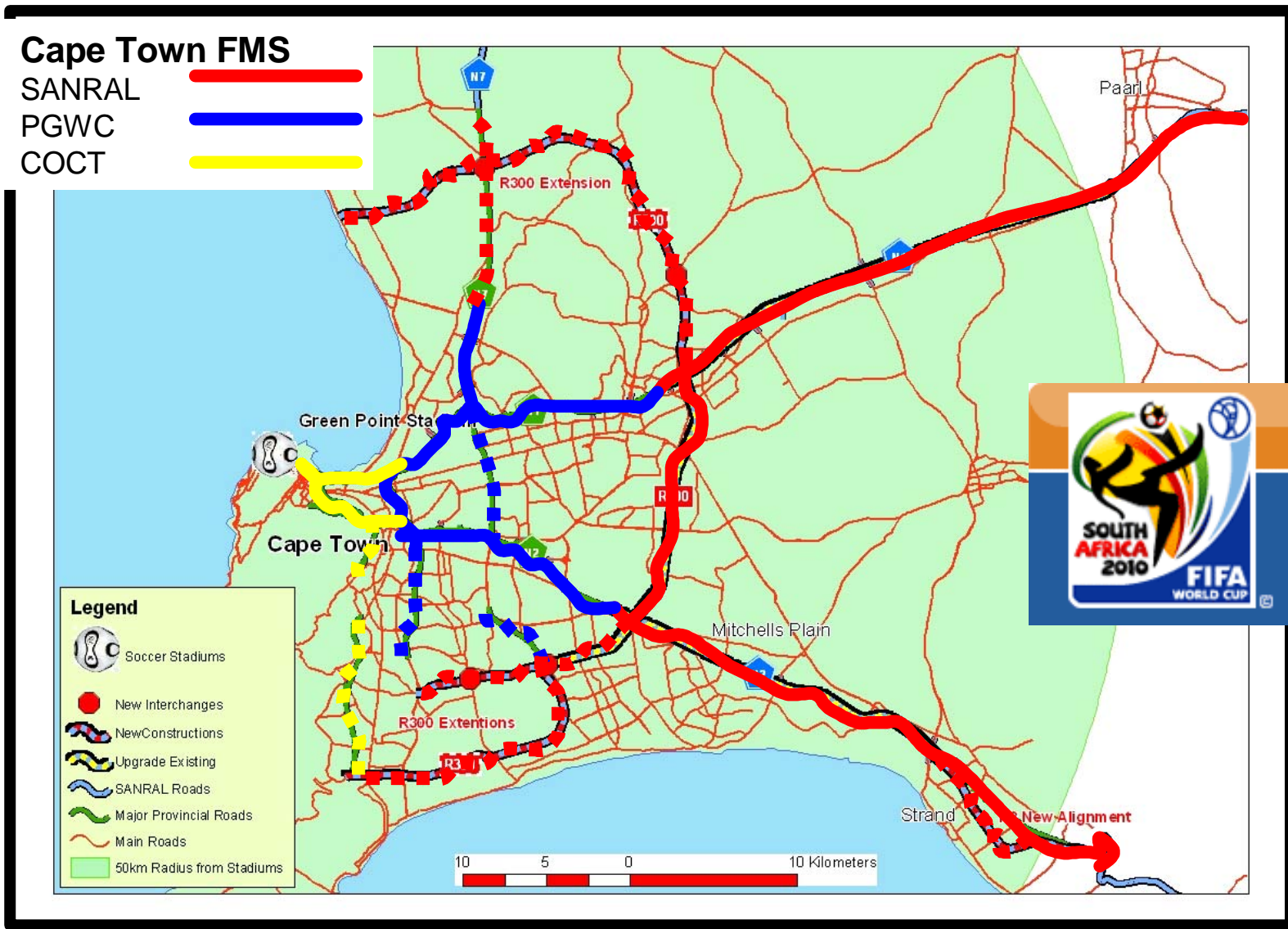




4. ROADS PROJECTS

- **NDOT PTIS Funding**
- **SANRAL**
- **Provinces**
- **Host Cities**

Freeways in the Cape Town Metropolitan Area. N1, N2, M3, M5, N7, R300. (SANRAL, PGWC and COCT)



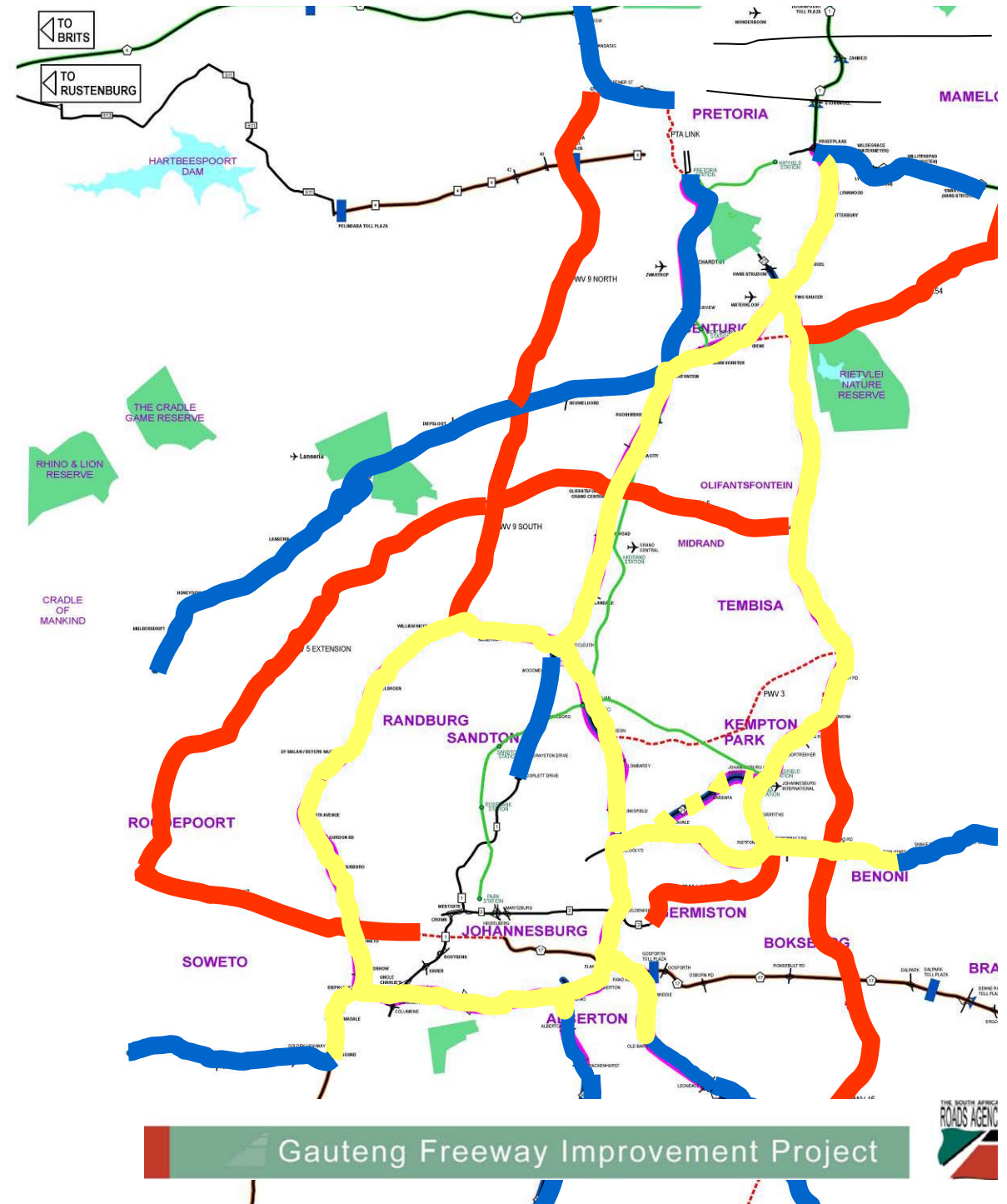
GFIP EXTENT:

PLANNED LANE ADDITIONS: 185 km (2010)

FUTURE UPGRADES: (223 KM)

PLANNED NEW ROUTES: 158 km

FINAL SCHEME: 561 KM

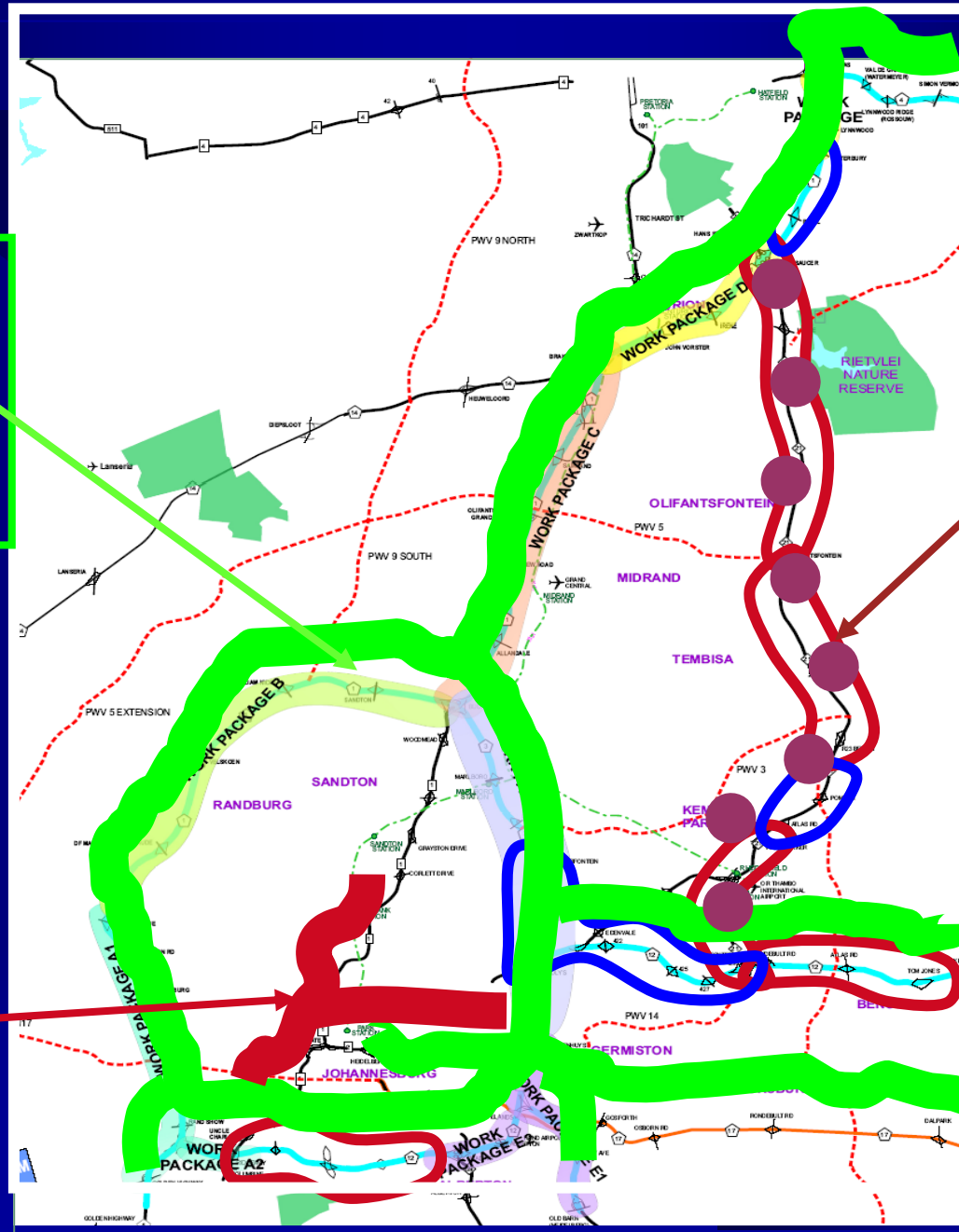


FREEWAY ITS NETWORK

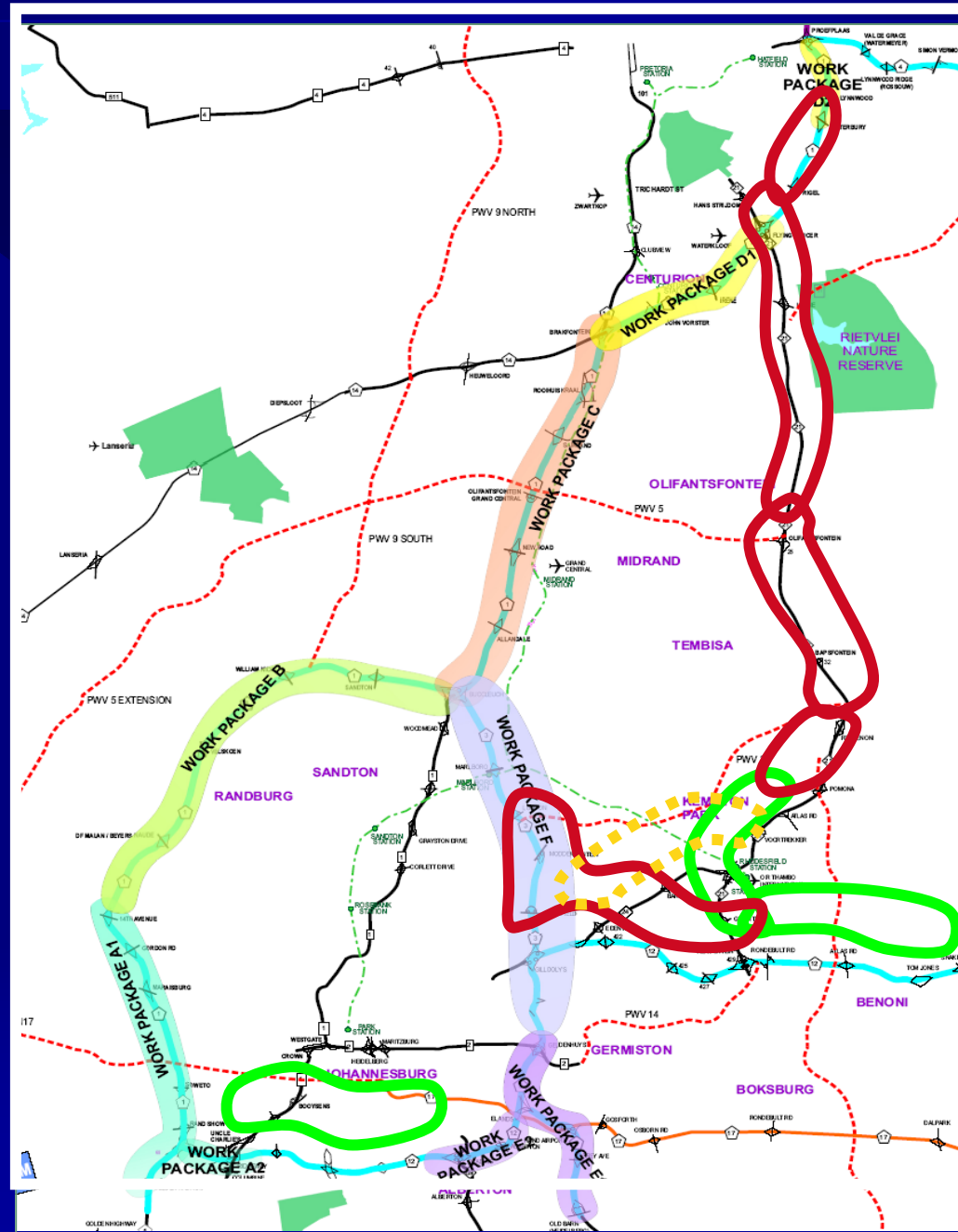
**SANRAL ITS
Network –
Implemented
(210 km)**

JRA ITS

Expansion



GFIP PHASE 1 – 185 km, ±R15 bil



PROJECT PROGRESS

- **SANRAL awarded tenders to the amount of R14,5 b (excl) up to Aug 08 (Phase 1)**
- **Construction commenced: June 08**
- **Construction milestone – lane widenings completed prior to 2010 World Cup (suspension of all works for 6 weeks during event)**
- **Specific completions for WC 2010:**
 - **R21 Pomona to Hans Strydom I/C**
 - **N1 Diepkloof to 14th Ave**
 - **N1 R21 to Atterbury**

LOFTUS PRECINCT: ROAD UPGRADES

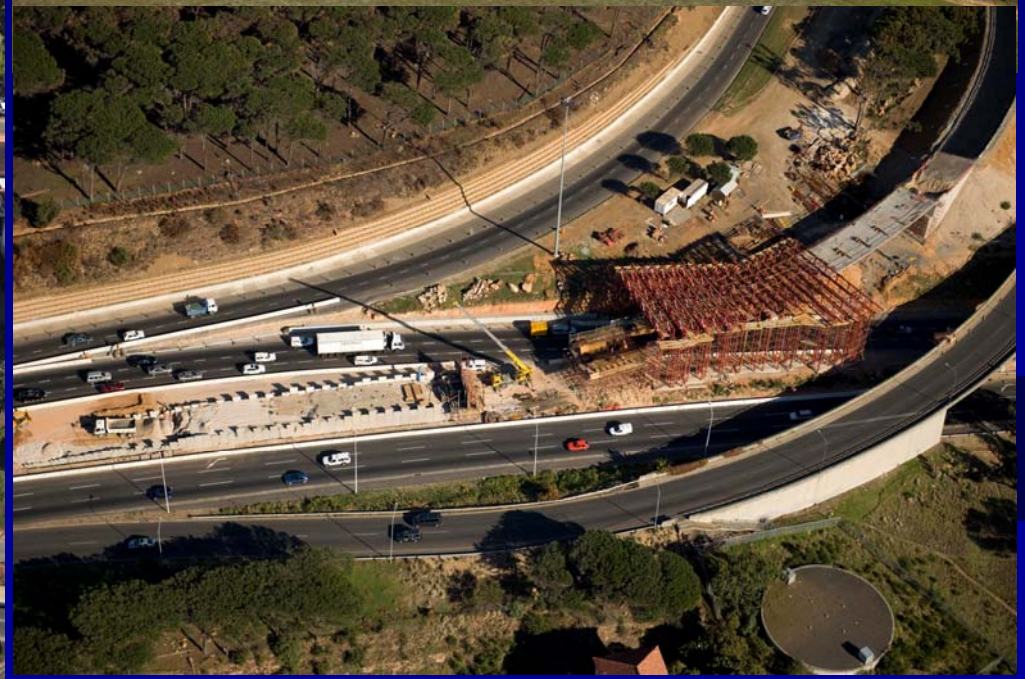
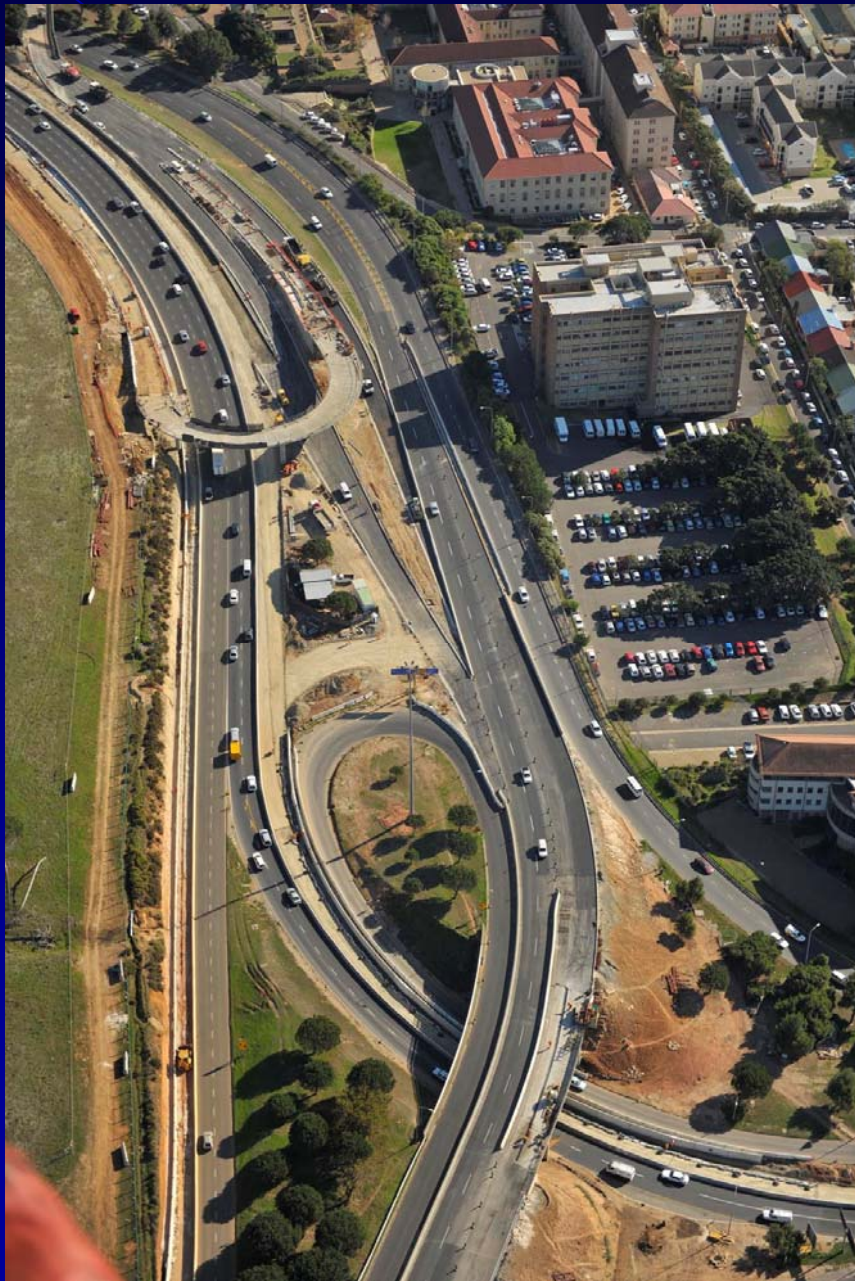


Koeberg Interchange Upgrade Phase 1 (2010)

Camps A & B



Hospital Bend Pre Selection Upgrade Scheme



DURBAN

- **Stadium opening Nov 09**
- **Road projects – finish May 2010**
- **La Mercy scheduled for operation – 1 May 2010**
- **Operational plans presently being rolled out**

5. OTHER TRANSPORT FACILITIES

- **Airports largely upgraded/operational – ORTIA excellent, Cape Town new terminal opened 7 Nov 09, La Mercy May 2010**
- **BRT Johannesburg operational, other cities imminent, Cape Town – only 2010 service**
- **Gautrain? JvdM: Airport link – “we can make it” – Will they?**
- **Multi modal facility Bfn – not completed by June 2010**
- **Mixed success with completion**







6. OPERATIONS

- **Host Cities implementing Ops Plans at present**
- **Coordination Host Cities/2010 OC/NDOT taking place**
- **NDOT presentation operations - World Media Function 5/12**
- **570 NDOT buses to arrive from now to May 2010**
- **National signage guide final towards end Nov 09**
- **WC – lack of funding for operational implementation?**
- **Funding nationally an issue**

TSHWANE: PROGRESS (1)

- **Stadium:**
 - Complete, new seats end March 2010
 - Minor upgrade of walkways/shuttle pick up points under construction
 - Lighting at parking sites being upgraded
- **Roads projects:**
 - Duncan – completed
 - Pretorius/Schoeman – completed Dec. 2009
 - Charles – April 2010

TSHWANE: PROGRESS (2)

- **Other transport facilities**
 - Wonderboom Airport: Upgrades completed
 - Pretoria Station overlay to function as regional transport hub end April 2010
 - Concern - rail mode not properly utilised
- **Transport operations**
 - TOP updated
 - Joint Transport Operational Command Structure to be established under Loftus Stadium VOC structure
 - Tpt Info provided for Host City/Prov/NDOT web sites in time for 4 Dec 09 final draw

7. ARE WE READY?

- **Stadia** – Construction fine
Supporting services?
- **Roads Projects** – Major improvements done
Not all complete
- **Other facilities** – Airports major improvements
Gautrain?
PRASA facility improvements, revised schedules,
rolling stock?
- **Operations** – Biggest challenge
Funding for operations now limited?
Training
Coordination/cooperation?
National guidance?

BOTTOMLINE

- **Infrastructure** - Stadia - should be 100%
 - Roads – should be 95% (of planned completion)
 - Other – should be 90% (of planned completion)

- **Operations** - Strong efforts still required
 - Pub tpt not 1st World level – unrealistic expectation
 - Potential serious risks (e.g. Funding, MBT)
 - Could approach 100% (to local standards)



