

# Overview of activities of the Global MLS Usersgroup

14.01.14

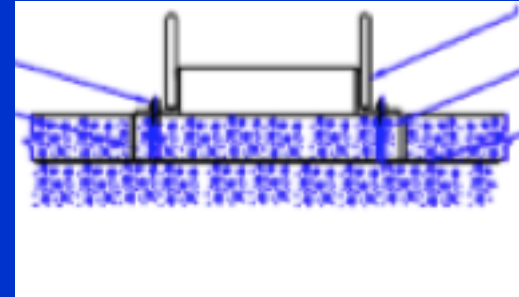
*Fred Hugo*



Extraction of Asphalt Slab Specimens for  
Laboratory Testing Using  
*Masonite® Separation Platform*  
(MSP)

Collaborative MLS – ALF Turner Fairbank study

# What is the MSP?

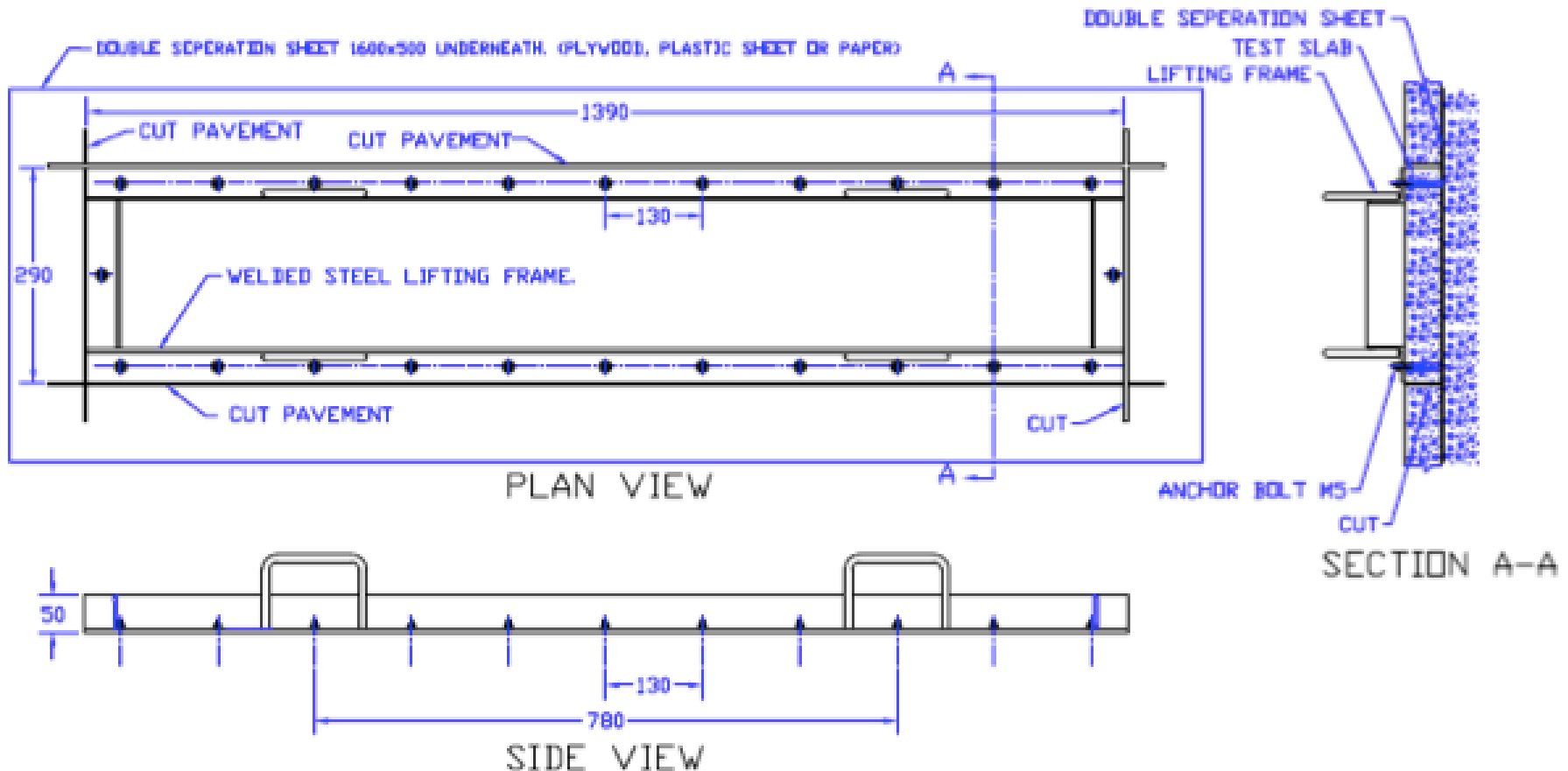


Cross section through MSP  
with frame ready to lift slab

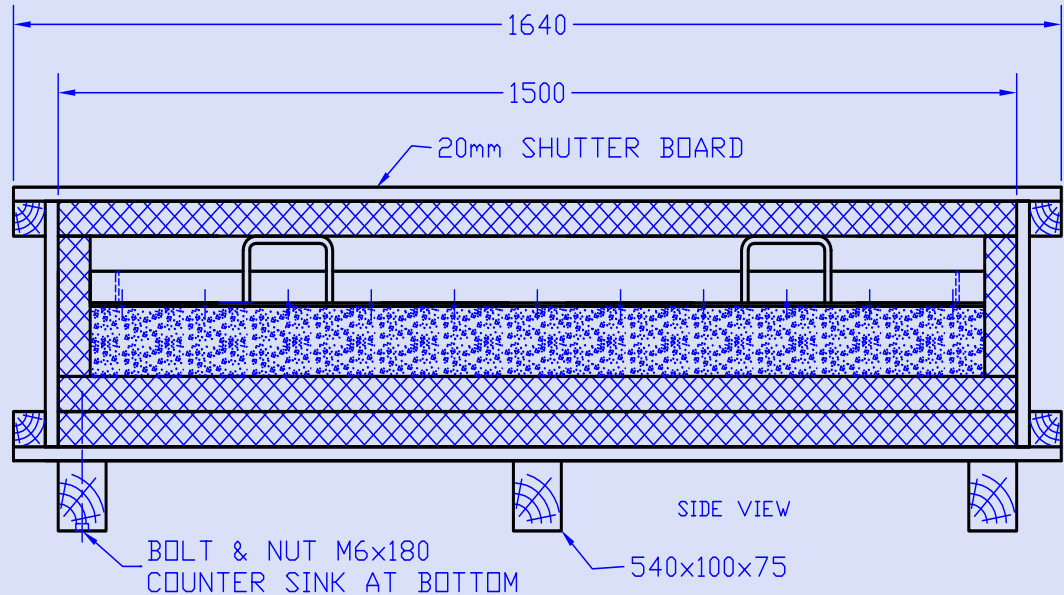
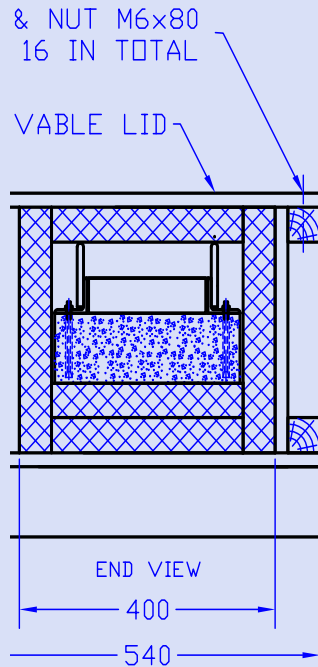
MSP ready for 2nd asphalt layer



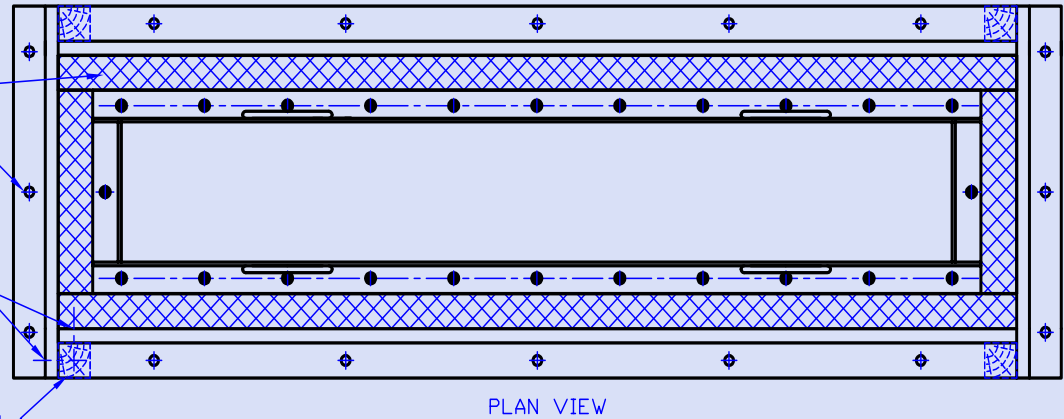
# Lifting Frame for Extracting the MSP



1. PLACE LIFTING FRAME ONTO TEST SECTION AND MARK PERIMETER.
2. DRILL PILOT HOLES  $\varnothing 6$  INTO PAVEMENT THROUGH HOLES IN FRAME.
3. REMOVE FRAME AND DRILL HOLES LARGER TO  $\varnothing 10$  TO TAKE M5 ANCHOR BOLTS.
4. CUT PAVEMENT ALONG MARKED LINES.
5. INSERT ANCHOR BOLTS AND REPLACE FRAME. USE 24 OR LESS BOLTS, ACCORDING TO EXPERIENCE
6. INSTALL WASHERS AND NUTS, BUT DO NOT OVER TIGHTEN.
7. LIFT SLAB BY MEANS OF THE 4 HANDLES. THE WEIGHT WILL BE ABOUT 46 kg FOR A 50MM THICK SLAB.



JAM SHEETS 50mm THICK  
 Ø7 FOR LID BOLTS  
 BOARD SCREWS 50x4mm  
 mm CDC MIN. ALL ROUND



S WITH PANEL CLOSEST TO VIEWER REMOVED.

DRAWN: J Muller  
Dec. 2013

INSULATED BOX FOR TRANSPORTING AND COOLING 1390x290x100 ASPHALT SAMPLE<sub>6</sub>

# Slab extracted using MSP at Turner –Fairbank ALF test site









# Installing the MSP



MSP during construction



# Box for transporting the slab



# Slab extraction next to ALF @ test site Virginia USA



ISBN 0-626-

SANS 3001-PD1:2014

Edition 1

## **SOUTH AFRICAN NATIONAL STANDARD**

Civil engineering test methods

**Part-PD1: Determination of permanent deformation and moisture sensitivity in asphalt mixes using a one-third-scale model mobile load simulator (MMLS3)**

Published by SABS Standards Division  
1 Dr Lategan Road Groenkloof, Private Bag X191 Pretoria 0001  
Tel: +27 12 428 7911 Fax: +27 12 344 1568  
[www.sabs.co.za](http://www.sabs.co.za)  
□ SABS

**SABS**

**SANS 3001-PD1:2014**

# Commercial Laboratory Applications of MMLS3 in South Africa

Report to MMLS3 User Group Meeting at TRB  
by

- Specialised Road Technologies
- Roadlab

## Applications

- 28 Test for Airports
- 108 Highways