

Feedback on:

- 11th international symposium on concrete roads, Seville, and
- 7th International DUT-workshop on Design and performance of sustainable and durable concrete pavements,

Prepared for presentation at the 20th meeting of the Roads Pavements Forum (RPF),

CSIR ICC, 10 November 2010

Erik Denneman



7th DUT workshop

- Carmona
- 33 participants (usual suspects),
- Two days presentations and discussion
- 31 papers, two from SA
- Session topics:
 - Materials
 - Design of concrete pavements
 - Concrete pavement performance
 - Innovative concrete pavement structures



7th DUT workshop, main themes:

- Modular pavements (rehabilitation and repair)



Buch et al 2010

7th DUT workshop, main themes:

- Modular pavements (continued)



Buch et al 2010



Tayabji et al 2010

7th DUT workshop, main themes:

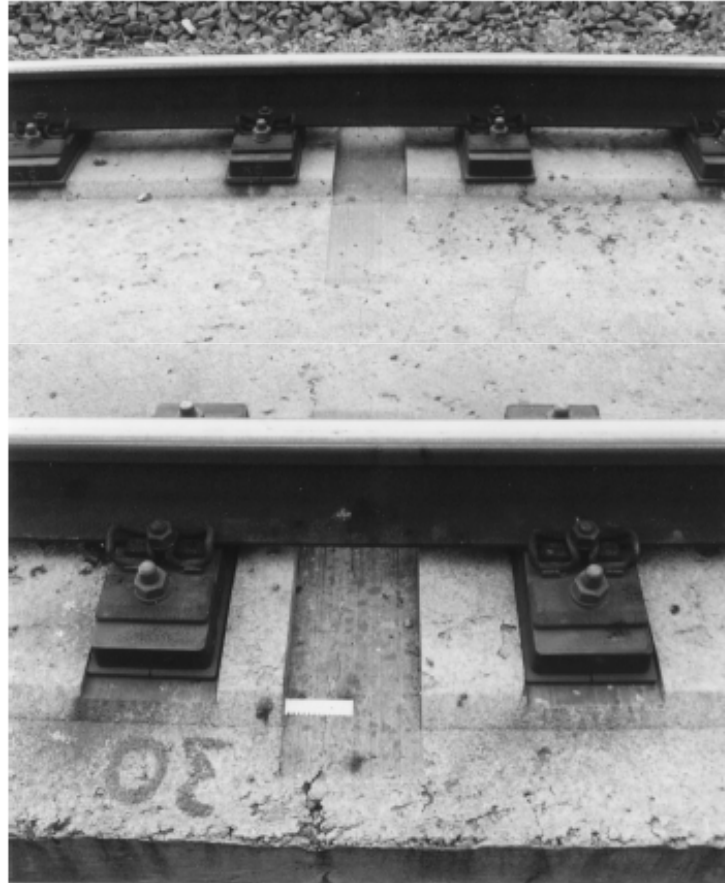
- Innovative solutions



Perrie et al 2010

7th DUT workshop, main themes:

- Innovative solutions



Lechner, 2010

7th DUT workshop, main themes:

- Sustainability:
 - Feedback on international conference on sustainable concrete pavements
 - Subbase design and the need for maintenance (Zollinger et al),
 - Silverbrand, three layer concrete pavement

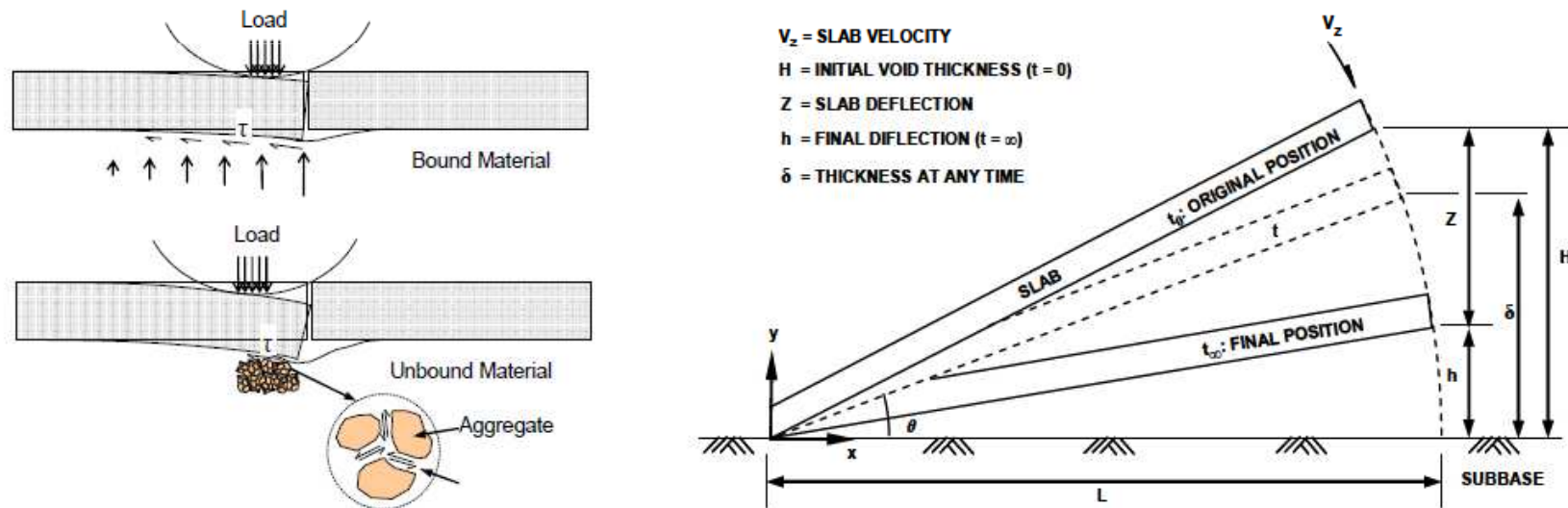
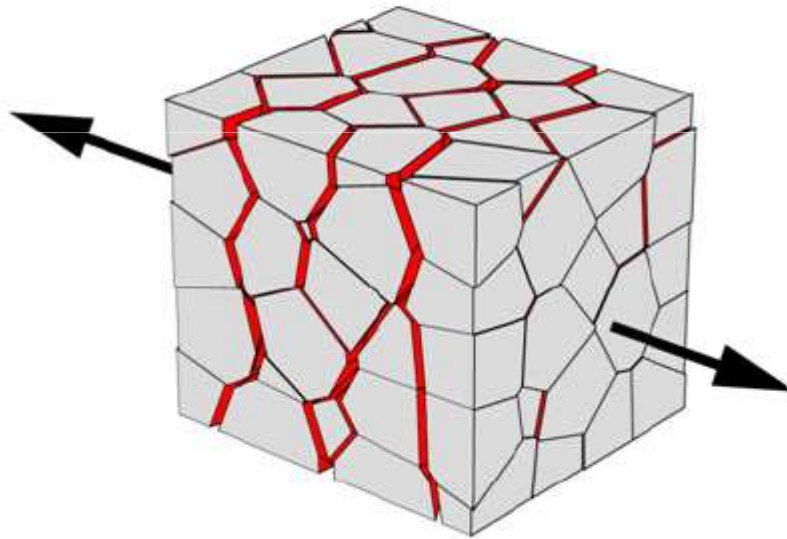


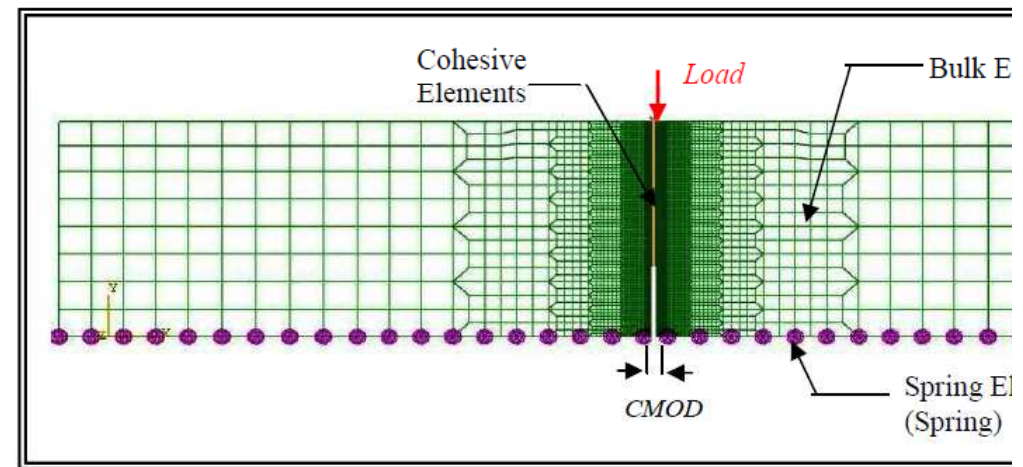
Figure 5: Slab Configuration of Erosion Modeling (Van Wijk, 1985).

7th DUT workshop, main themes:

- Fracture mechanics
 - 5 papers on the need for and use of fracture mechanics in concrete pavement design



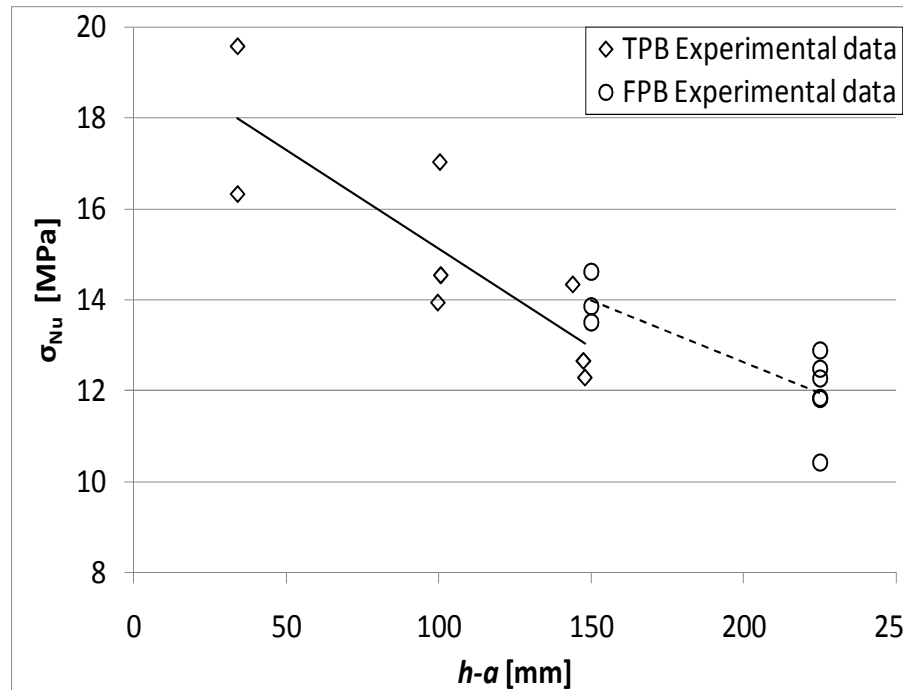
Thompson et al, 2010



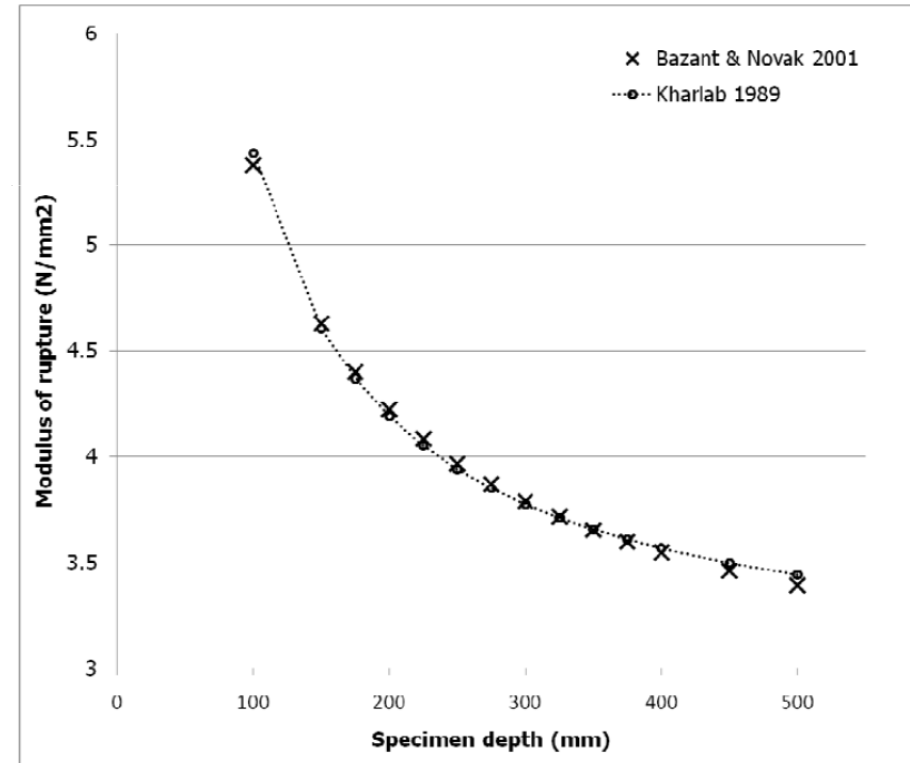
Roesler et al, 2010

7th DUT workshop, main themes:

- Size effect: 3 papers



Denneman et al, 2010



Khazanovich et al, 2010

11th international symposium on concrete roads, Seville

- 108 papers, from 22 countries,
- Three days of presentations
- Excursions
- Two papers from SA
- One honorary membership

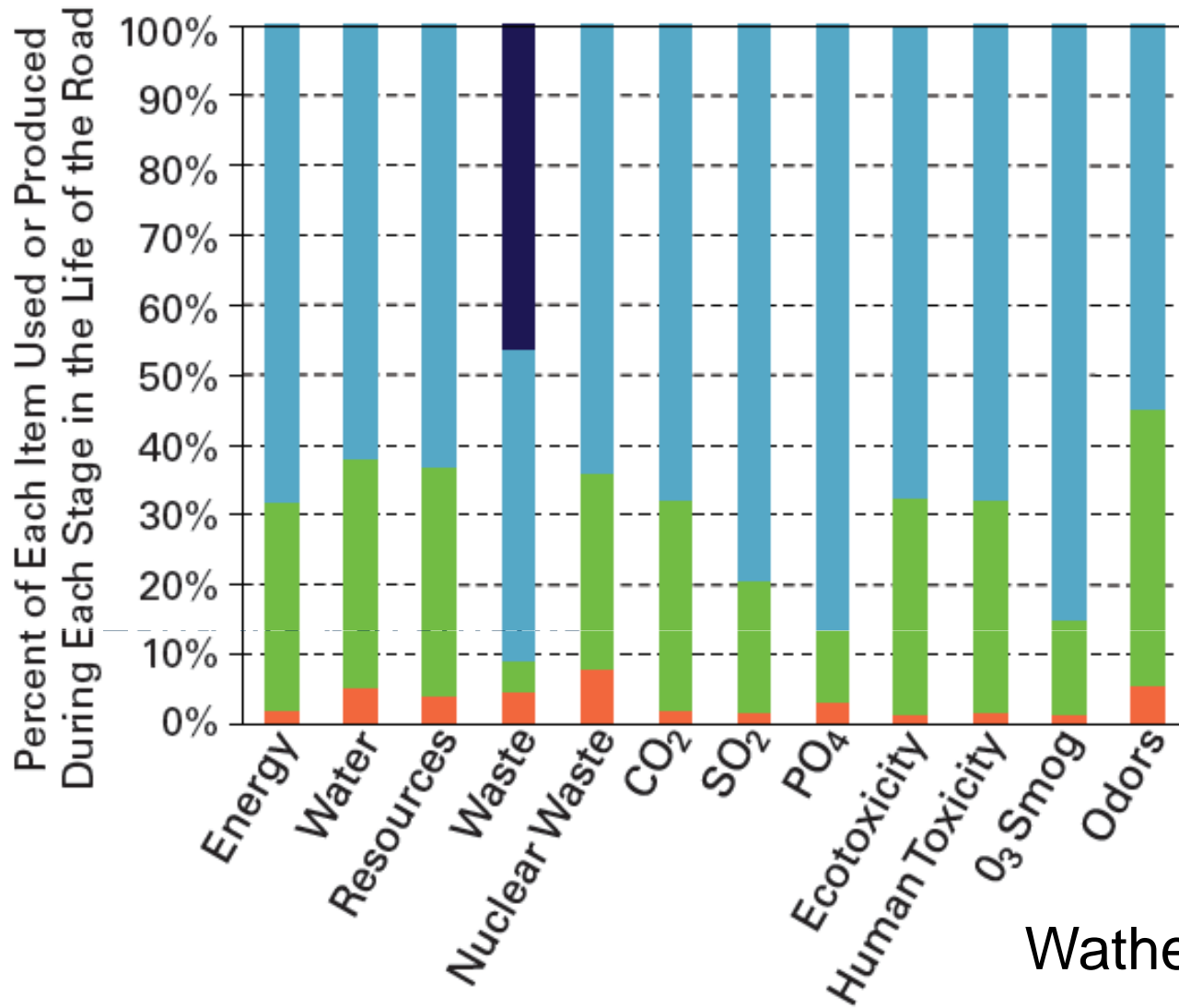


Honorary ISCP membership for Louis Marais



SA Delegation

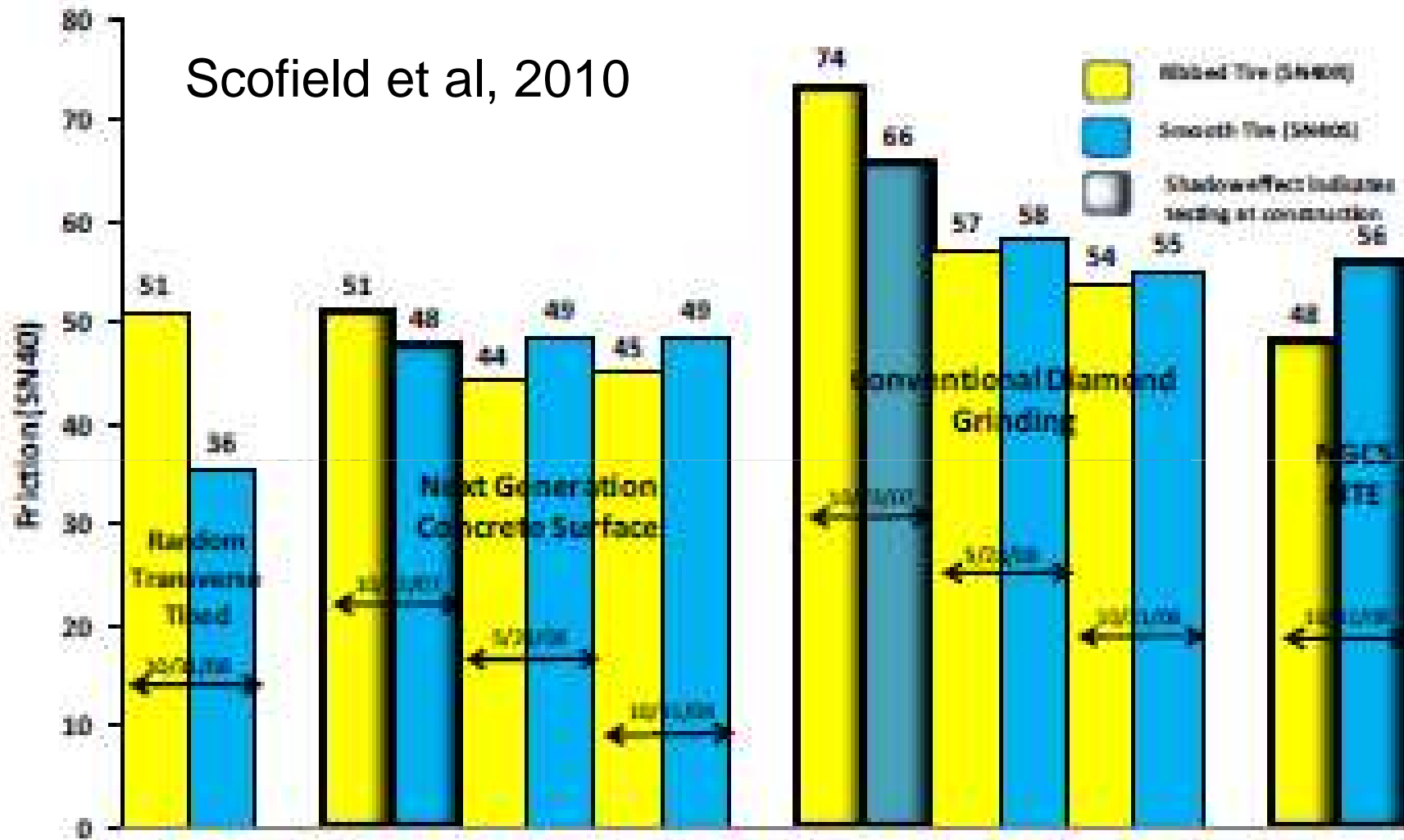




Wathe, 2010



Scofield et al, 2010

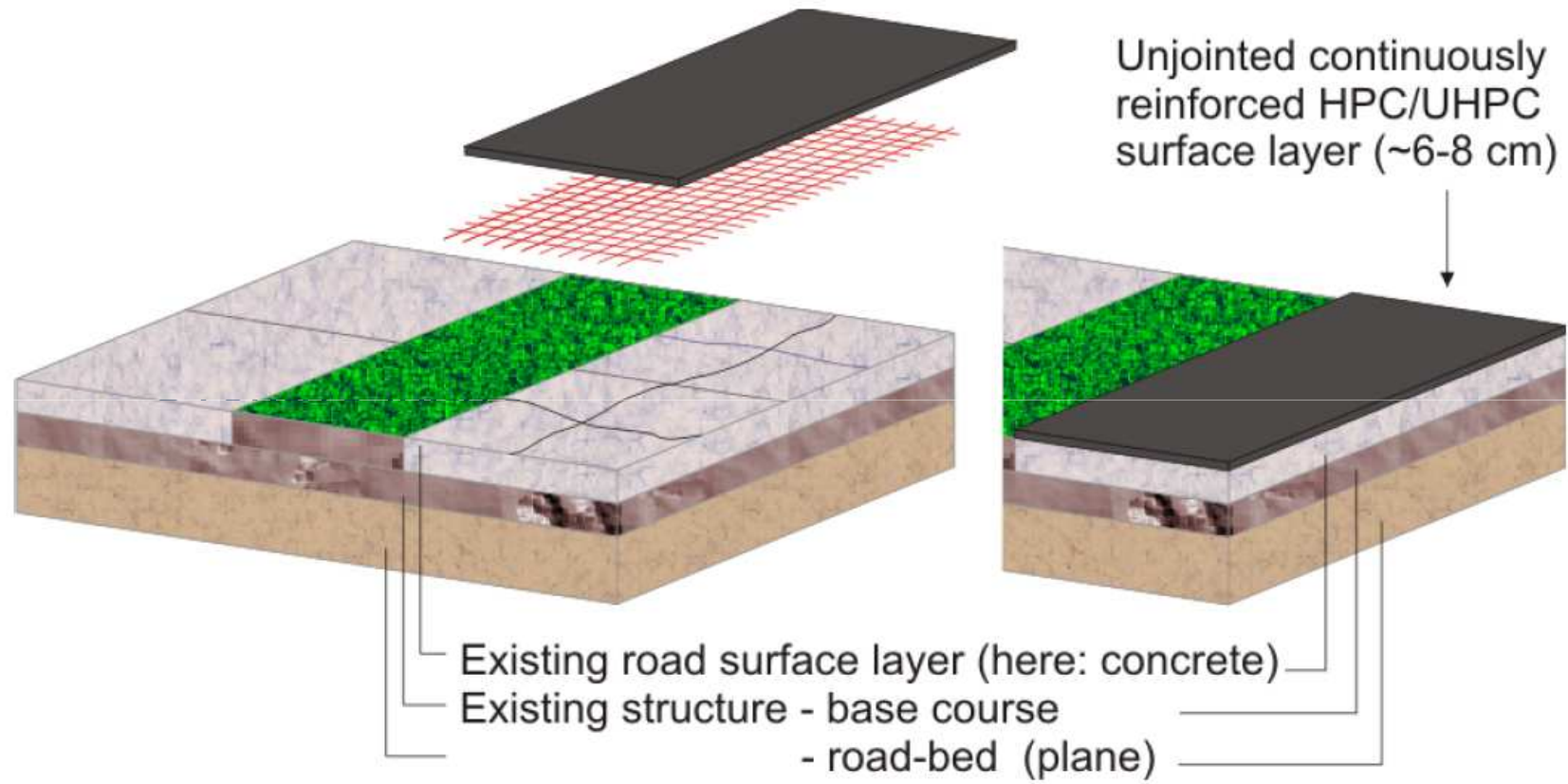


- Climate change
- Pollution reductions

Conference themes

- **Theme 3**
Techniques for good maintenance, repair & rehabilitation
- • Fast-track, early opening
- • **(Ultra)(Thin) white topping (7 papers!)**
- • Overlays-inlays
- • Precast slabs
-

Conference themes



Schmidt et al 2010

Conference themes



Figure 10 – Application of textured finish – note good texture after hardening.

Burger et al 2010

Conference themes



Photo 14 - Roller screed in use at Mamelodi

Louw et al 2010

Conference themes

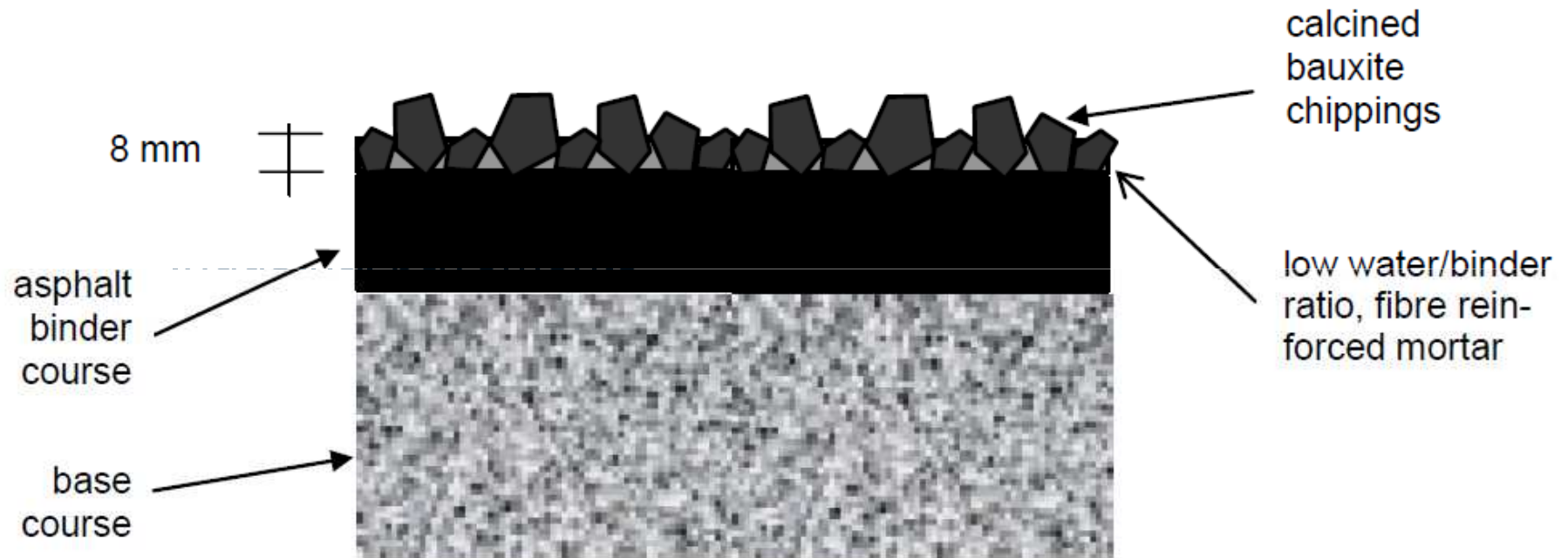


Figure 1 – Principle of the HPCM solution

De Larrard et al 2010

Thank you

CSIR

our future through science