

ROADS PAVEMENT FORUM (NOVEMBER 2008)

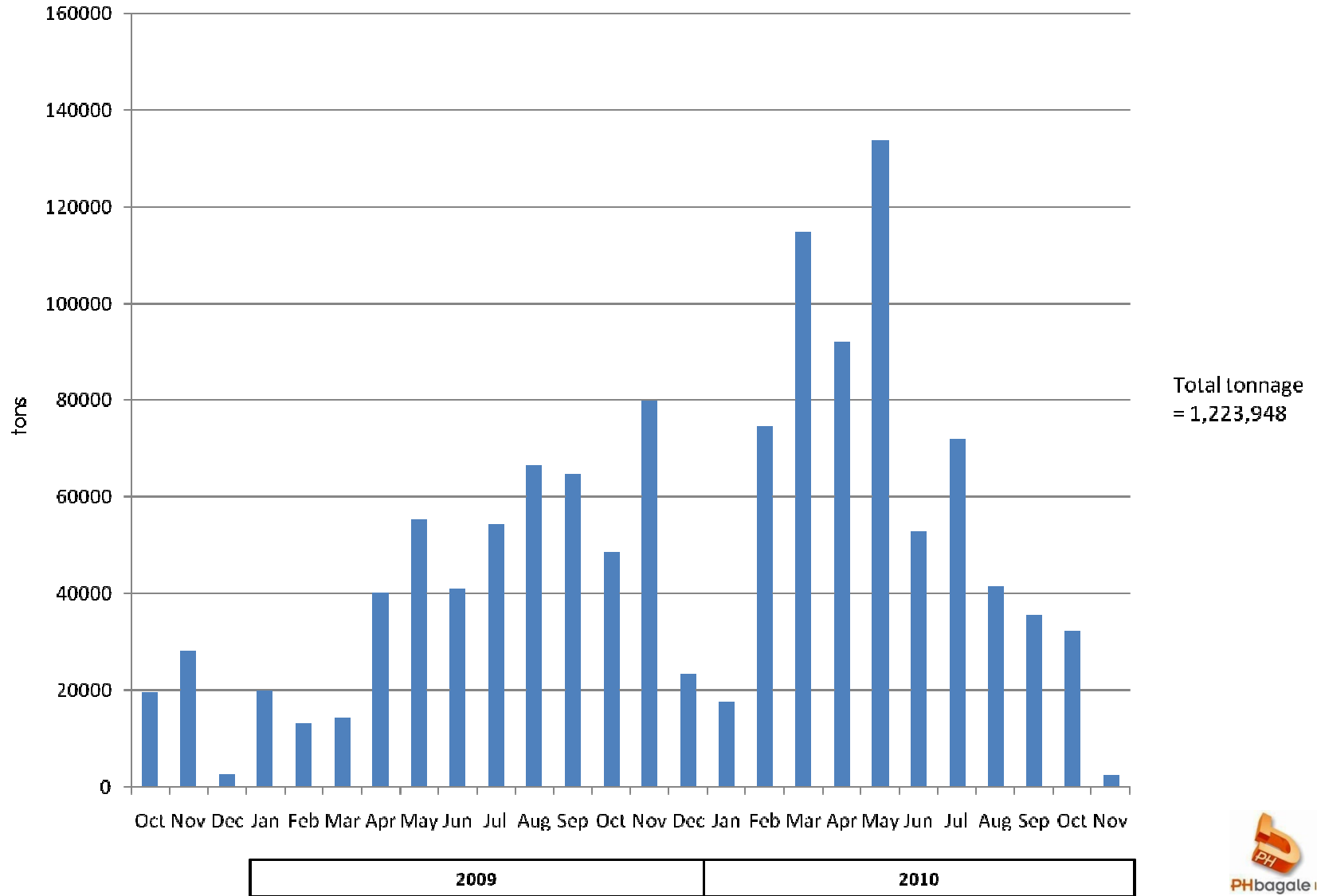


Figure 1: Total asphalt tonnage

ROADS PAVEMENT FORUM (NOVEMBER 2008)

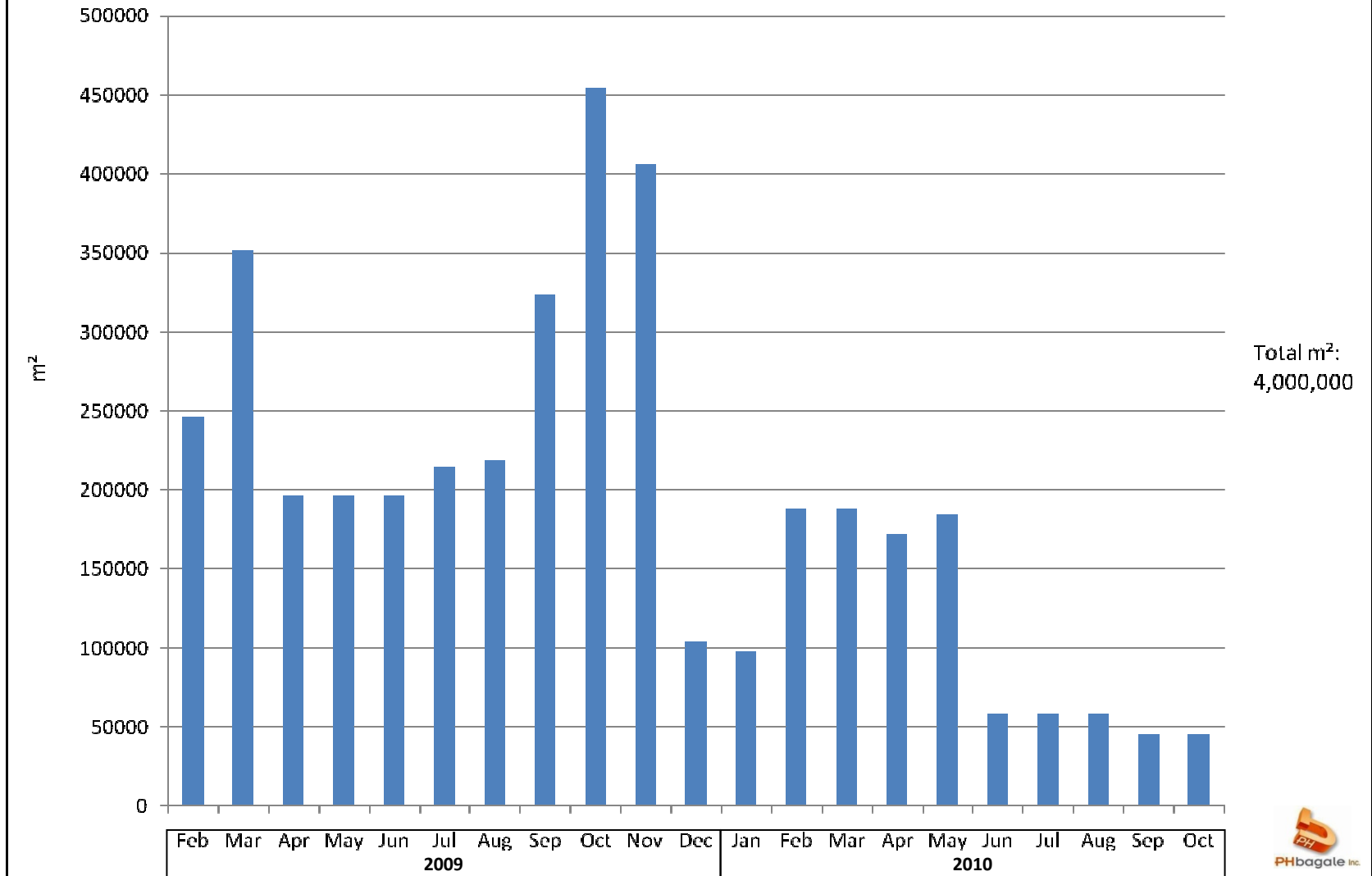


Figure 2: Single seal (SAMI) requirements

BITUMEN REQUIREMENTS: PROGRAMME

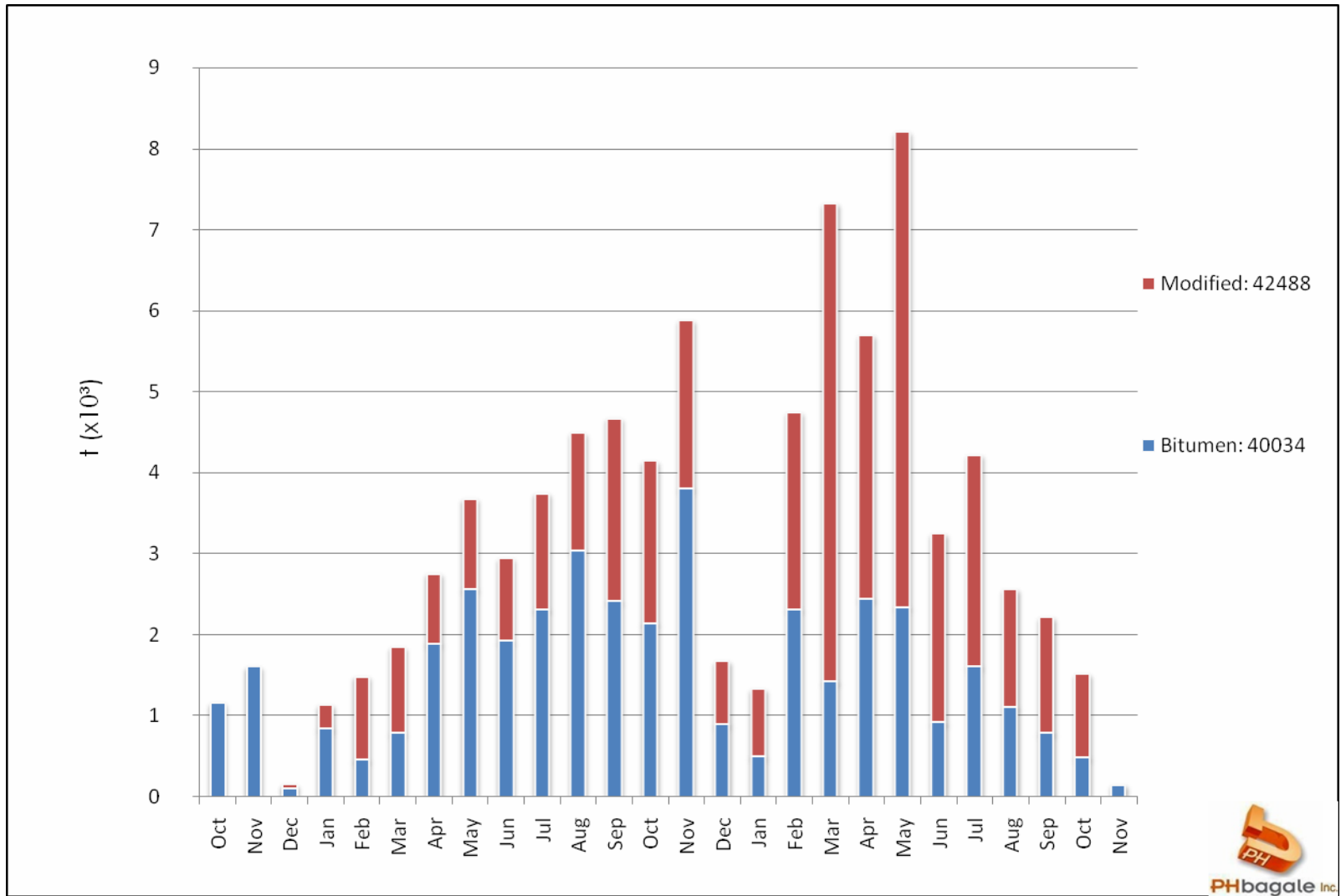


Figure 3: Total bitumen requirements



TOTAL MATERIAL REQUIREMENTS

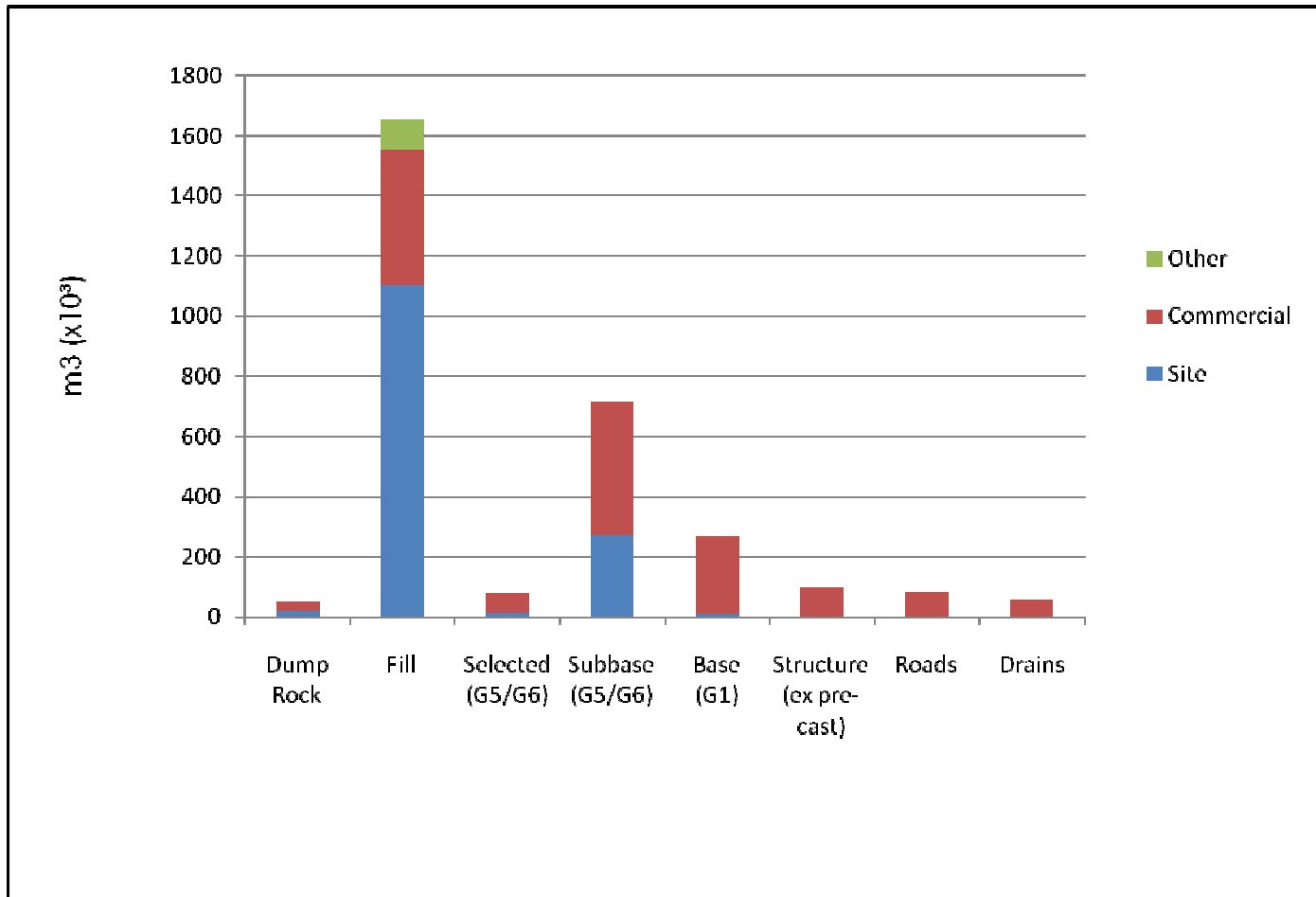


Figure 4: Total material requirements