



CETA'S MANDATE, FUNCTIONS AND CHALLENGES IN THE PROMOTION OF SKILLS DEVELOPMENT

ROAD PAVEMENTS FORUM

VENUE: CSIR INTERNATIONAL CONFERENCE CENTRE

10 NOVEMBER 2009

DR THABANG MATOBAKO



FRAMEWORK OF PRESENTATION

- Strategy
- Sub-sectors
- CETA's mandate
- Obligations from state of the nation address
- CETA's commitment
- Sectoral opportunity framework
- Strategic relationships
- Current challenges



STRATEGY

MISSION

“Promote and ensure quality of education and training in the construction sector”

VISION

“Service excellence driven skills development authority, towards a sustainable and competent construction sector”



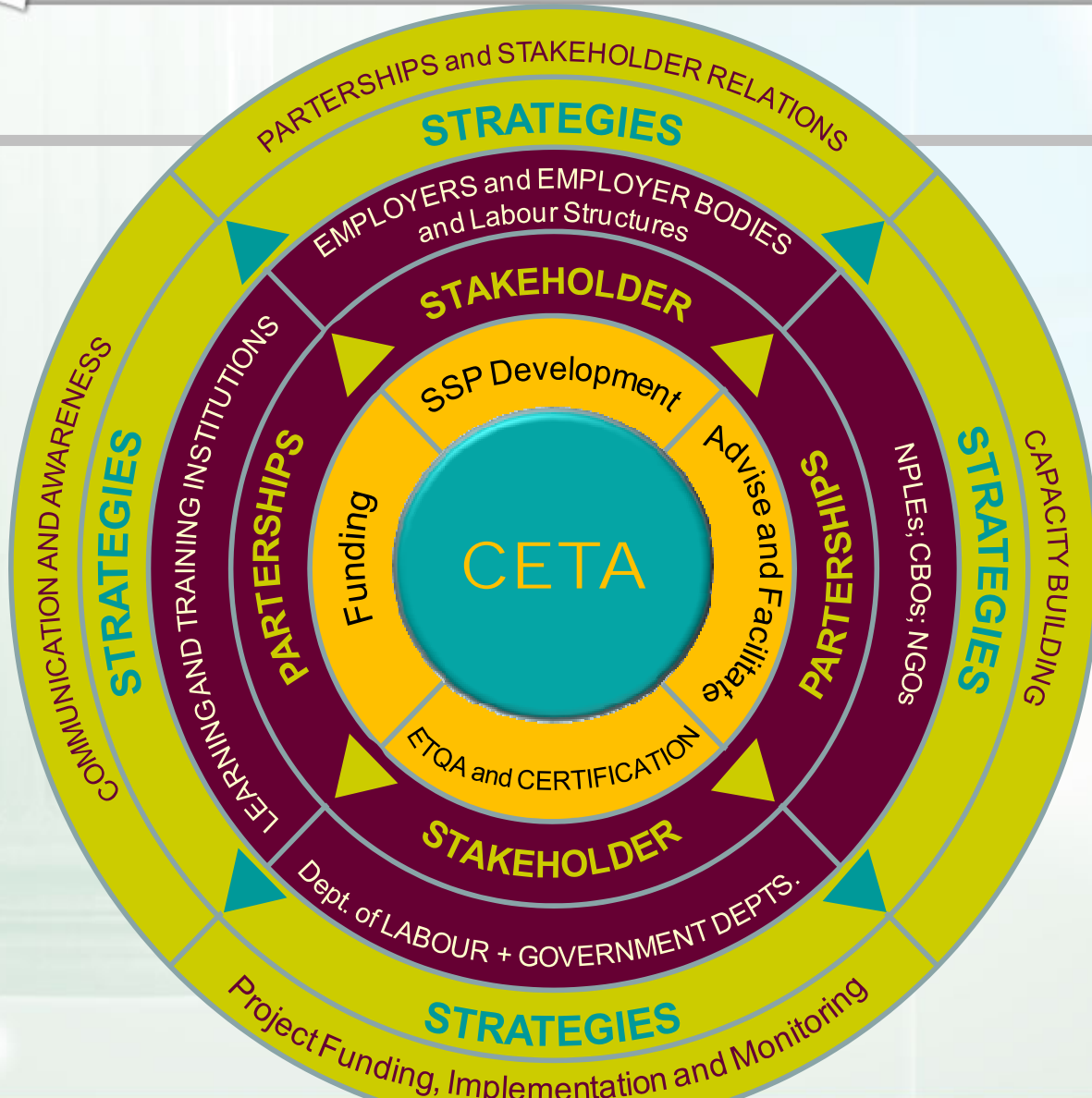
SUB-SECTORS

- Build and civil construction
- Materials manufacturing
- Build Environment Professionals (BEP)



CETA'S MANDATE

- Develop & Implement Sector Skills Plan
- Influence Training & Skills Development
- Implement Learning Programmes
- Collect & disburse Grants to Employers
- Quality assure learner achievement
- Report progress to Department of Labour





Obligations from state of the nation address

Construction Sector-Relevant Priorities:

- Speeding up economic growth**
- Creating decent work and sustainable livelihoods through training**
- Strengthening the skills and human resource base**



Other obligatory considerations

- ❑ **Social infrastructure development**
- ❑ **Transforming our cities and towns**
- ❑ **Adult Basic Education and Training**
- ❑ **Twinning skills development initiatives with infrastructure development**
- ❑ **FET sector as sites of skills development**



CETA's Commitment

- ❑ Partnerships to promote quality skills
- ❑ Standards to promote Quality life long learning
- ❑ Skills to promote formal sector growth
- ❑ Skills to promote SMME Sector
- ❑ Skills to support access to labour market by the Youth, Women and the disabled



Sectoral opportunity Framework

Discretionary grant focal points:

- Road infrastructure
- Airport infrastructure
- EPWP
- Expanded provision of housing
- Municipality and provincial infrastructure



Learning Pathways

- Learnership and Skills Programmes
- RPL Assessment (unit standard based)
- Trade Testing (MTA)
- Apprenticeship (MTA)
- Bursaries
- Internships
- Adult Basic Education and Training (ABET)



Strategic relationships

- Memorandum of Understanding
- CETA Participation on Corporate Social Investment
- Joint participation on Rural Outreach
- Participation on provincial initiatives
- Participation on Stakeholder Forums
(Provincial skills development forums)



Contributions to the roads sector

- MoU with SANRAL
- Registration of standards with SAQA
- Accreditation of civil construction providers
- Quality assurance of Bombela CJV learners
- Certification of Bombela CJV learners (3000)

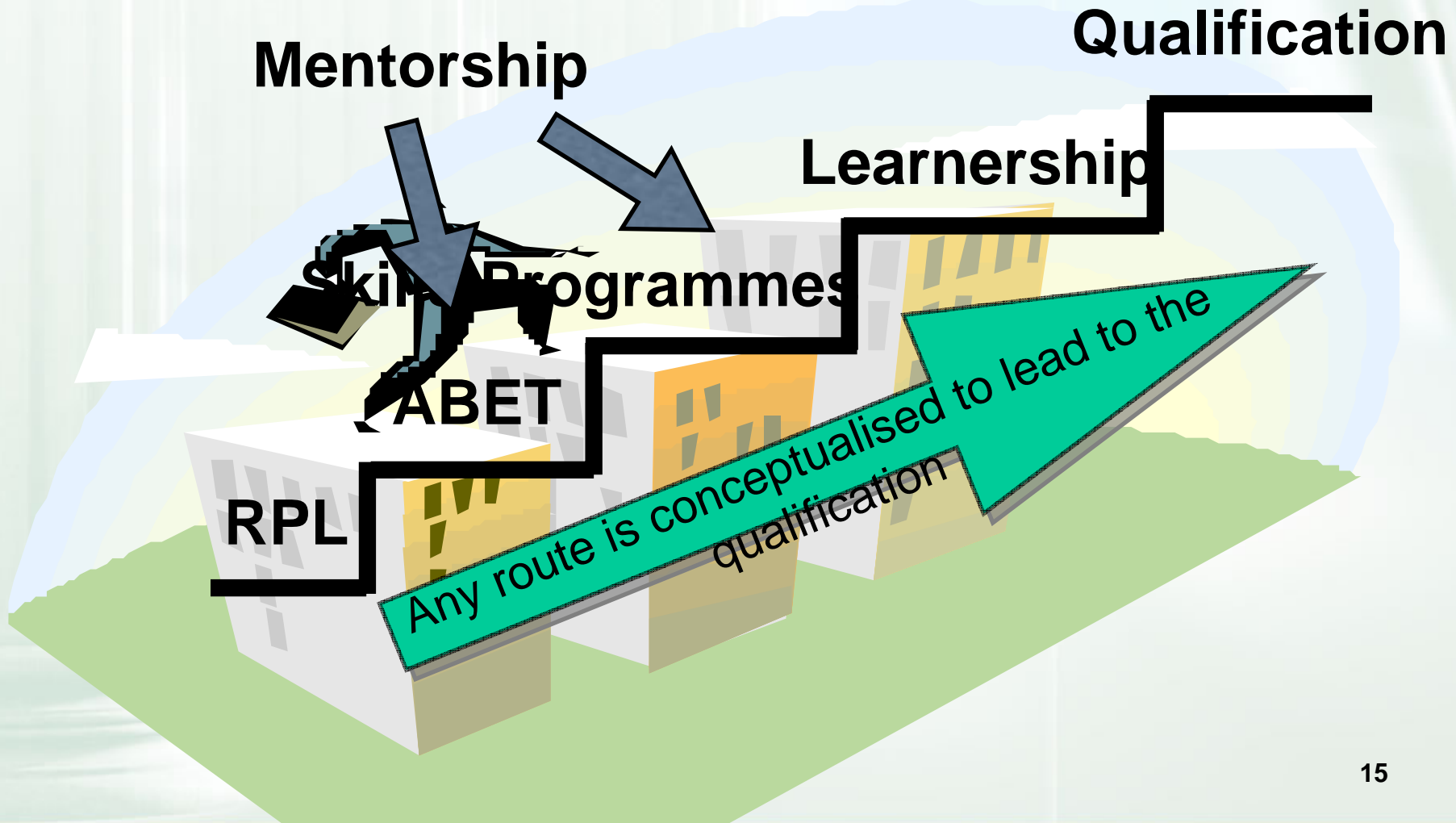


Current challenges

- Re-establishment
- Visible contribution of civil-subsector on the SSP
- MoUs with professional councils
- Promotion of quality partnerships



CETA Developmental Approach to Skills Development





Thanking you

On behalf of ...

Construction Education and Training Authority [CETA]

For more information

E-mail: ceo@ceta.co.za

+27 11 265 5900

+27 11 265 5925

www.ceta.org.za

www.labour.gov.za

www.saqa.org.za

