



THE CONCRETE
INSTITUTE



29 August to
1 September

Marriot Hotel



Organized by:



In Collaboration with:





Structure

- **Podium and Poster Sessions**
 - Monday and Wednesday
- **Workshops (full and half day)**
 - Tuesday
- **Exhibition**
 - Monday to Wednesday
- **Field trips**
 - Thursday
- **Social**
 - Reception on Sunday
 - Dinner on Wednesday



Plenary Session

- **Tribute to Frank McCullough**

- Speaker included:

- John Hodgkinson
- Michael Darter
- David Pittman
- David Fowler

- Presentation of a document to his family



Podium Sessions

- Innovations in design and construction of CRCP
- Sustainability
- Testing and Instrumentation
- Surface characteristics
- Composite pavements
- Structural design
- Airport pavements



Podium Sessions

- Concrete overlays
- Durability
- Long term performance
- Recycled materials
- Economics
- Rehabilitation



Poster sessions

- On similar topics
- Mainly students

Workshops

- Roller-compacted concrete (RCC)
- CRCP
- Recycling
- Overlays
- Full-depth reclamation



Workshops cont.

- Performance engineered mixtures
- Precast systems
- Airfield design
- Industrial concrete pavements
- Lightweight aggregate/Internal curing



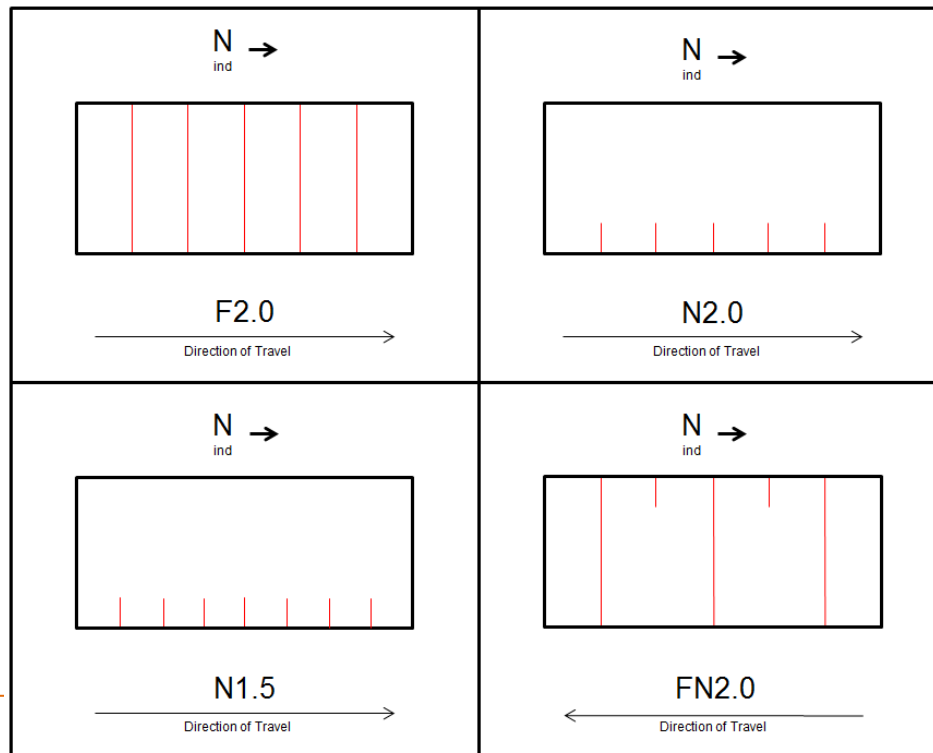
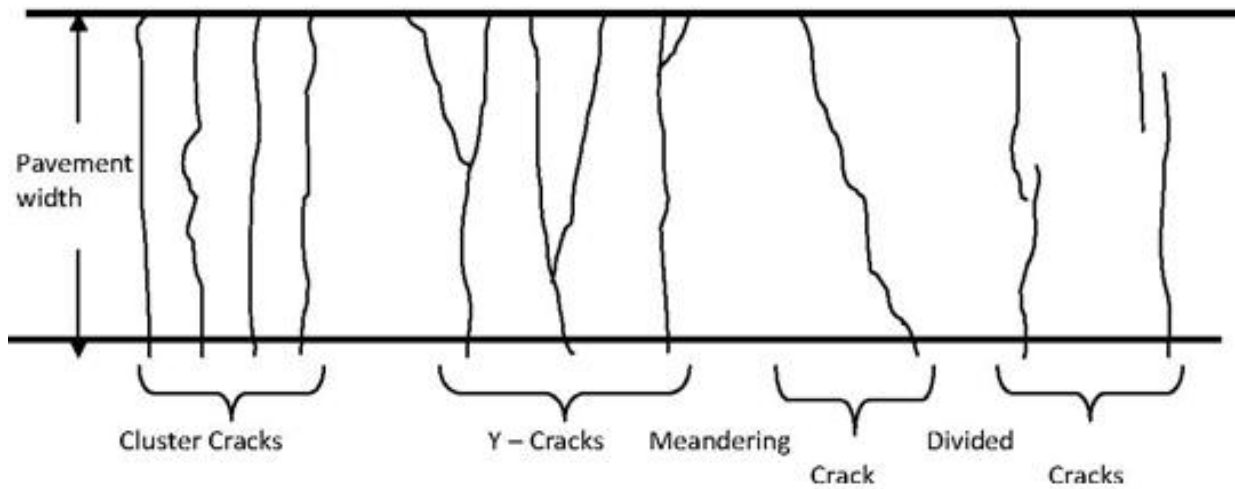
Outcomes

- **Paper presentations** 56
- Poster presentations 26
- **Workshops** 10
- Exhibitors 22



Outcomes cont.

- CRCP jointing



Outcomes cont.

- CRCP jointing
- Large increase in RCC especially in logging areas and fracking regions. Consideration of thin RCC on CTS for lower volume roads.



Outcomes cont.

- CRCP jointing
- Large increase in RCC especially in logging areas and fracking regions. Consideration of thin RCC on CTS for lower volume roads.
- **Increasing use of RCA and alternative aggregate sources**

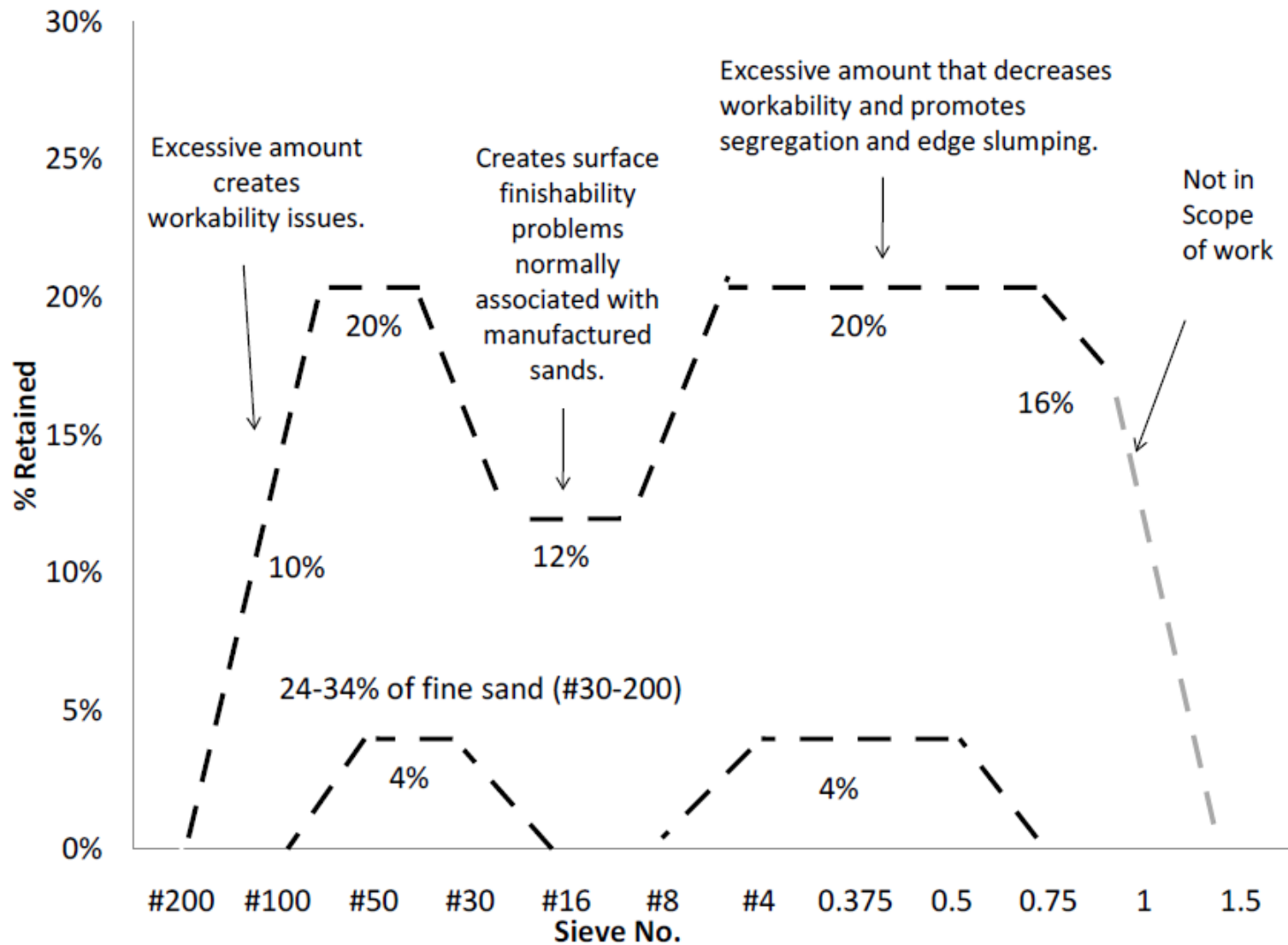


Outcomes cont.

- Increased use of FDR using cement (various types)

Outcomes cont.

- Increased use of FDR using cement (various types)
- Performance engineered mixes.



- VKelly
- Box
- Resistivity / Formation factor
- Sorptivity/ Knick point
- Dual ring





Outcomes cont.

- Increased use of FDR using cement (various types)
- Performance engineered mixes.
- **Lightweight aggregate/Internal curing**

- What are the *potential* impacts of IC w/ FLWA on Concrete Pavements?
 - Reduced moisture curling magnitude
 - Decreased built-in curl (permanent)
 - Less cracking potential
 - Impact of IRI
 - More durable surface and less spalling?
 - Decreased surface cracking
 - Reduced risk during early-age plastic and shrinkage cracks
 - Lower elastic modulus
 - Smaller crack widths



The Information Centre @



THE **CONCRETE**
INSTITUTE



Visit us

Monday – Thursday 8:00-16:30

Friday 8:00-16:00

Block D Lone Creek

Waterfall Park

Bekker Road

Midrand 1682

GPS coordinates

S 26° 0,724' E 28° 6,983'

E-mail us

info@theconcreteinstitute.org.za

Phone us

011 315 0300

Search our Online catalogue and make requests:

<http://www.tciinformationcentre.co.za/ActiveConnect2002/default.html>



Thank you